

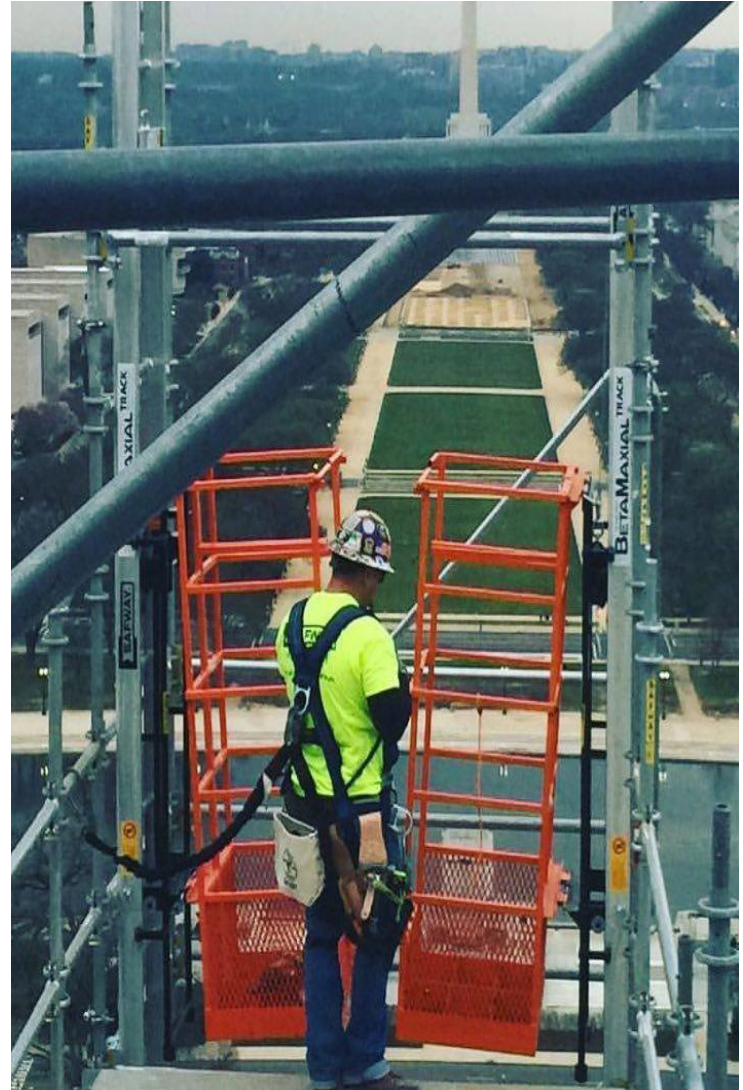


## KEY FEATURES

- Hoist of choice for expedited Scaffold Erection & Dismantlement for over 20 years
- More efficient use of man power, resulting in less worker fatigue and significant increase in jobsite safety
- Perfect job-site partner for Industrial Boiler Maintenance - Engineered to fit easily through boiler access ports for system scaffold E&D
- Narrow Track System option available for Boiler Access Ports less than 24" wide
- Multi-purpose carrier basket solution delivers materials to the job level after scaffold is in place
- Durable lightweight design that is easy to transport and install with no tools required
- Standard and narrow track systems available
- Customized operational heights available
- Long lasting performance with minimal maintenance required

## MAXIAL TRACK HOIST

**Height: Up to 250ft + Capacity: 450lbs**



## INDUSTRIES SERVED

- **Scaffolding**
- **Construction**
- **Industrial Service Applications**
- **Power Plants**



**Contact Beta Max today  
to discuss your project or get a quote.**

**[www.BetamaxHoist.com](http://www.BetamaxHoist.com)**

**(800) 644-6478**

\* All Beta Max Hoist Systems meet or exceed ANSI & OSHA specifications. This information is intended to be informative only, and does not constitute a representation or warranty with regard to Beta Max Hoists or any products or services provided. Prices and information are subject to change. Some or all of the renderings in these materials may vary from the actual hoists.

Rev. 05-2016

**SPECIFICATIONS**

<b>Set Up</b>	
<b>Lift Capacity</b>	<b>450 lbs</b>
<b>Lift Speed</b>	<b>80 fpm</b>
<b>Lift Height*</b>	<b>Up to 250ft</b>
<b>Wire Rope Length</b>	<b>250 ft (1/4" GAC) or 350 ft (3/16" GAC)</b>
<b>A/C Power</b>	<b>110v 30 amp, or 220v 20 amp</b>
<b>Track Width</b>	<b>24" Standard or 15" Narrow</b>

**MAXIAL BASKET OPTIONS**



**Systems Scaffold**

**Carrier "XL"**

28" x 22.5" x 72" H  
(Fully Assembled)



**Frame Scaffold**

**Carrier**

66" x 20" x 74"H



**Universal Platform**

32" x 24" x 64.25H



**Contact Beta Max today  
to discuss your project, or get a quote.**

**[www.BetamaxHoist.com](http://www.BetamaxHoist.com)**

**(800) 644-6478**