

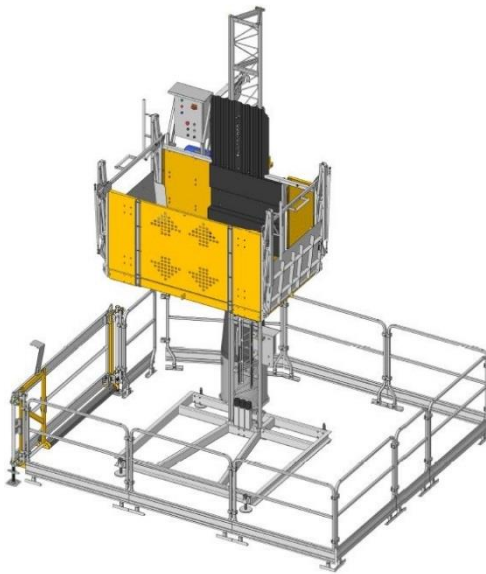


Original Instructions

TRANSPORT PLATFORM / MATERIAL HOIST

BETA MAX

MC2500 TP/M V



PARTS MANUAL

Rev. 1.0 - 2016

1895 Robert J. Conlan Blvd
Palm Bay, FL 32905
P: 800.233.5112 --- F: 321.768.9517
www.betamaxhoist.com

Descriptions and photos are only to be considered as pure illustrations. They may or may not be exact representation due to updated and revised changes made to the product.

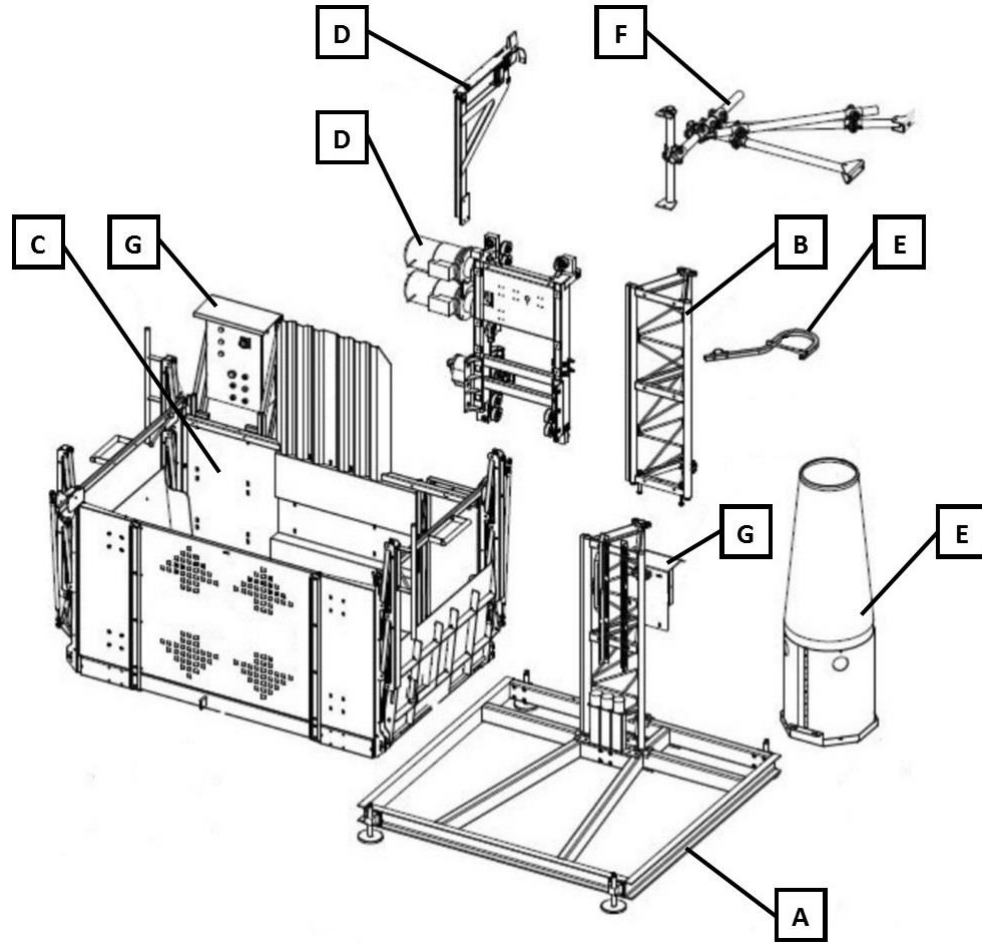
According to continuous technological innovations, Beta Max, Inc. reserves the right to make any modifications with the intention of improving the product without notice.

All rights reserved.

Copyright © 2016 BETA MAX, Inc.

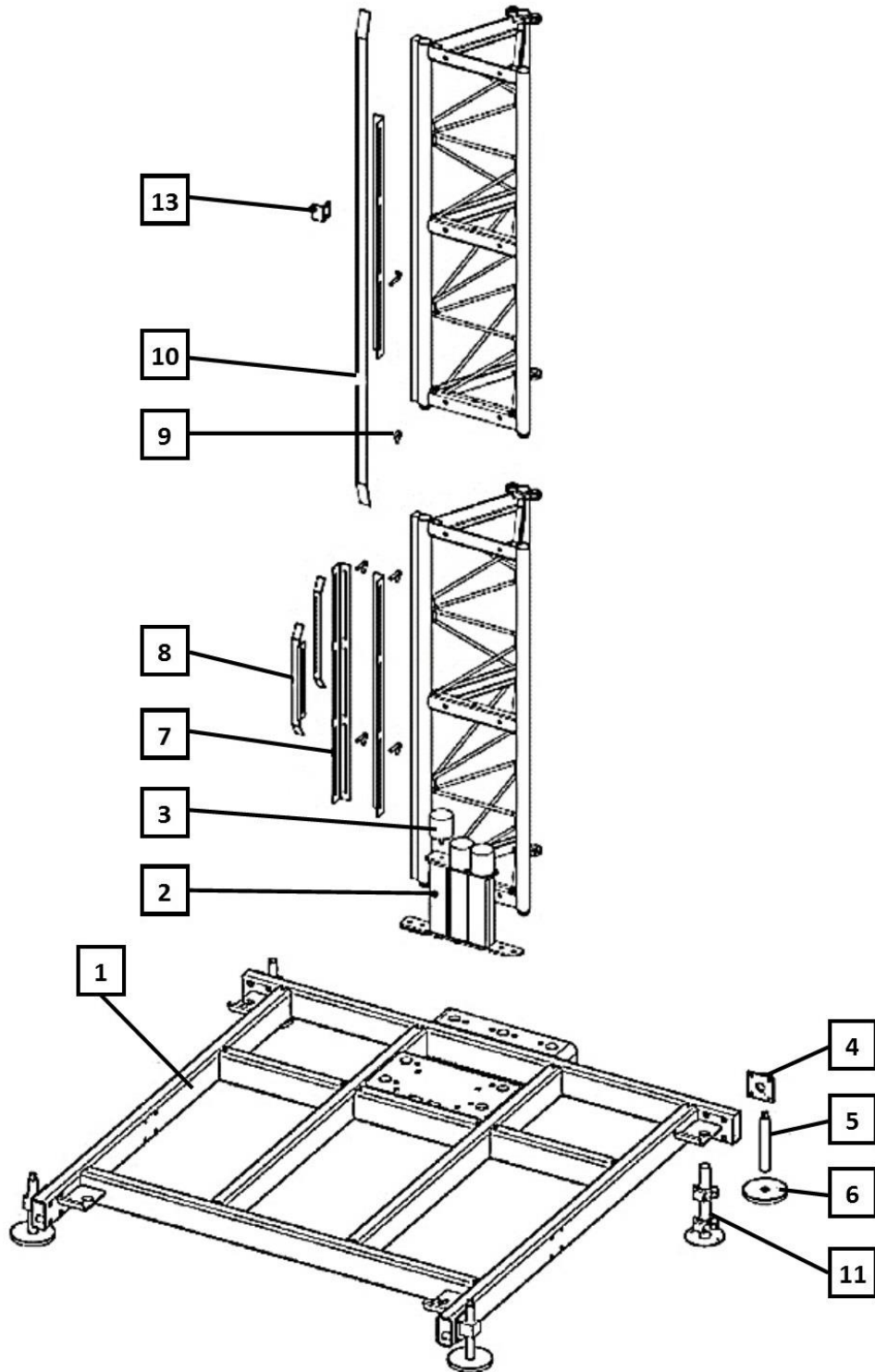
Reproduction of this document by any means, in whole or in part, is prohibited without the authorization of BETA MAX, Inc.

Sections Exploded View



Item	Description	Page Number	Notes
A	Base Unit	1	---
B	Vertical Mast Section	3	---
C	Loading Unit	5	---
D	Lifting Unit	11	---
E	Electrical Cable Guide Unit	19	---
F	Wall Tie Assembly	21	---
G	Electrical Control System	23	---
H	Accessories	45	---

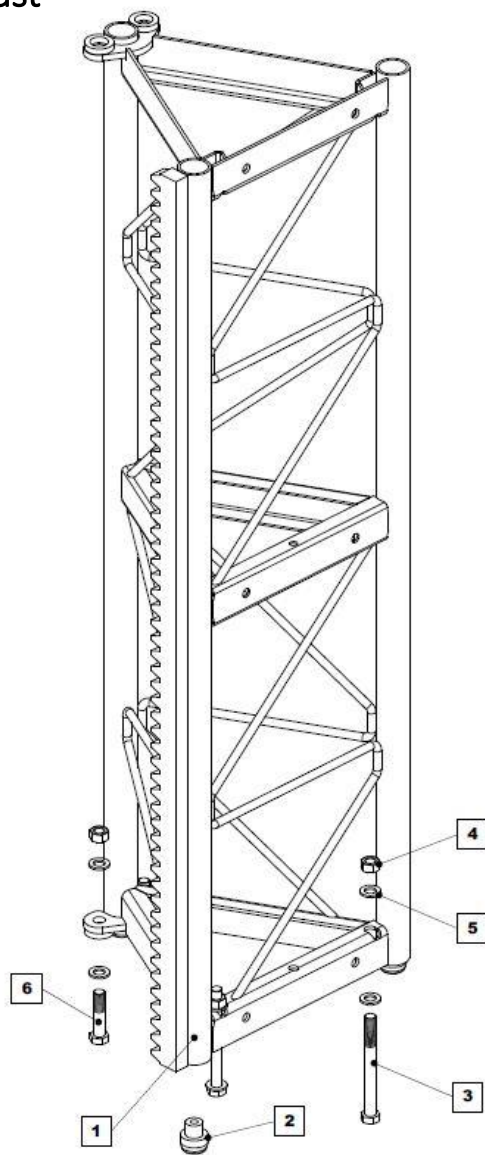
Section A – Base Unit





Item	Part Number	Description	Notes
1	##	Base Unit	---
2	##	Buffer Stand	---
3	10-287	Buffers	---
4	10-296	Screw Jack Mount (Old Style)	---
5	10-283	Screw Jack (Old Style)	---
6	10-291	Screw Jack Pad (Old Style)	---
7	10-521	Cam Mounting Rail	---
8	10-513	Limit Switch Cam	---
9	10-534	J-Bolt, Nut and Washer	---
10	10-431	3-Meter Cam	---
11	10-719	Screw Jack (New Style)	---
13	15-3	Floor Stop Flag	---

Section B – Triangular Mast

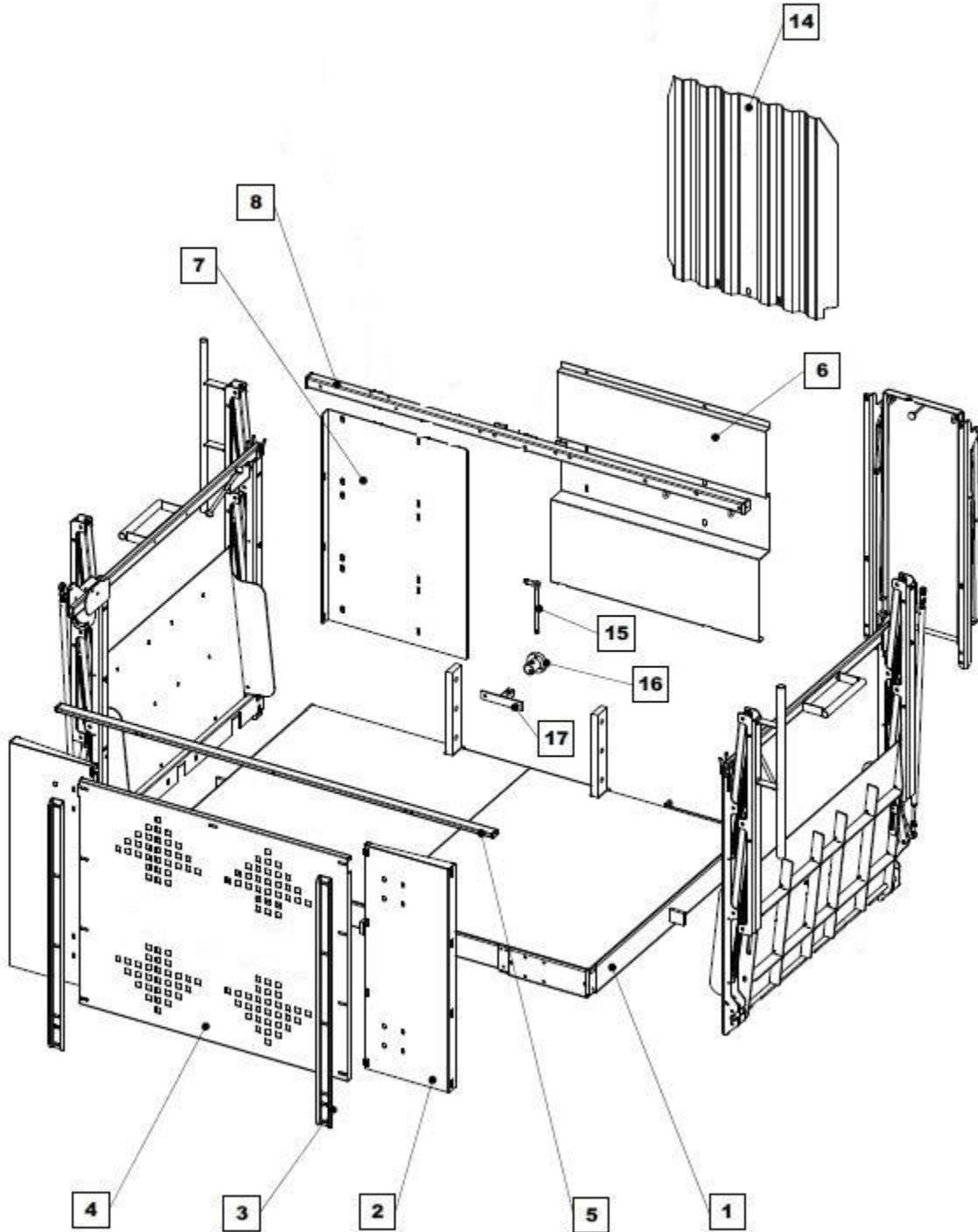


Item	Part Number	Description	Notes
1	10-502	Triangular Mast Section	---
2	10-999	Mast Pin	---
3	10-528	16mm x 160mm Mast Bolt	---
4	00000000001015	16mm Lock Nut	---
5	00000000001016	Washer	---
6	10-529	16mm x 70mm Mast Bolt	---



This page has been left blank for formatting purposes

Section C – Loading Unit

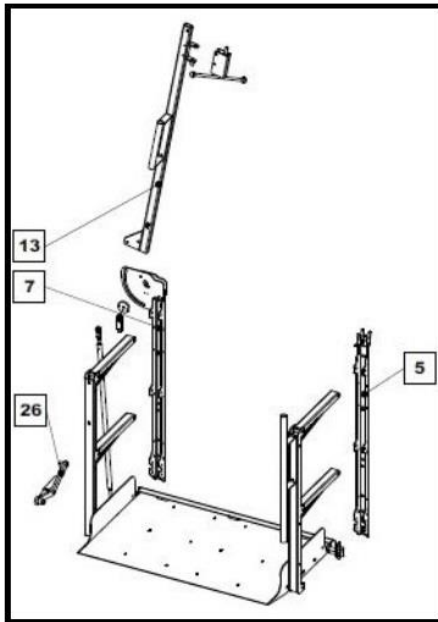




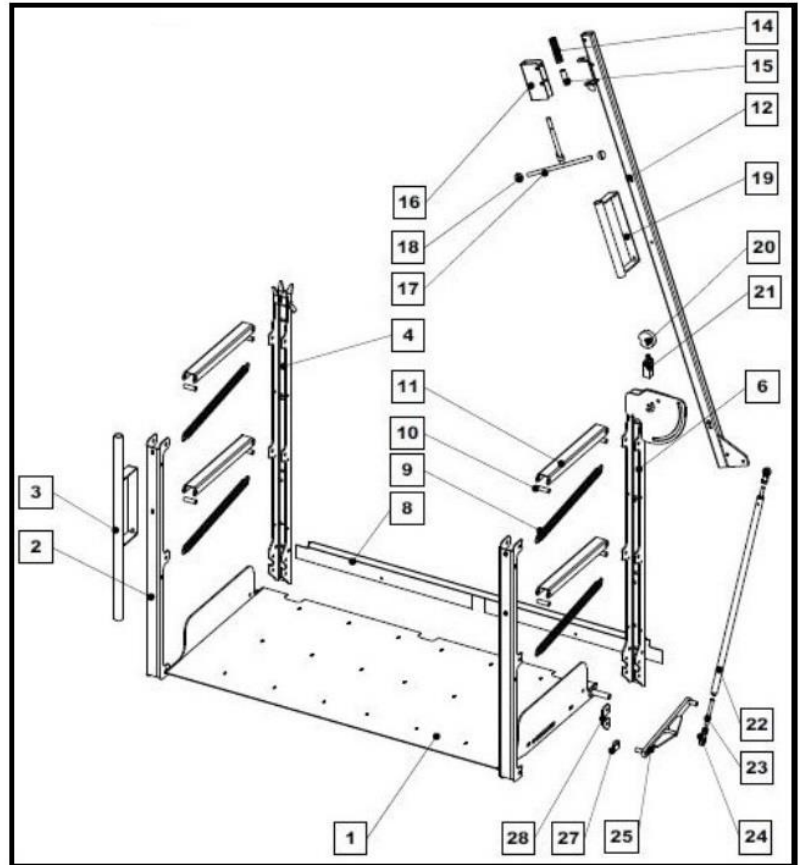
Item	Part Number	Description	Notes
1	##	Loading Unit Base	---
2	10-777	Loading Unit Front Side Panels	---
3	30-422	Front Side Panel Mounting Rail	---
4	10-500-8	Front Face Panel	---
5	10-779	Front Face Top Rail	---
6	30-420	Rear Panel	---
7	30-421	Rear Side Panel	---
8	30-423	Rear Top Rail	---
14	10-500-13	Mast Guard	---
15	10-500-11	Safety Brake Reset Wrench	---
16	10-500-10	Safety Brake Reset Socket	---
17	##	Safety Brake Reset Tool Mount	---

Loading Ramps

Left Gate



Right Gate

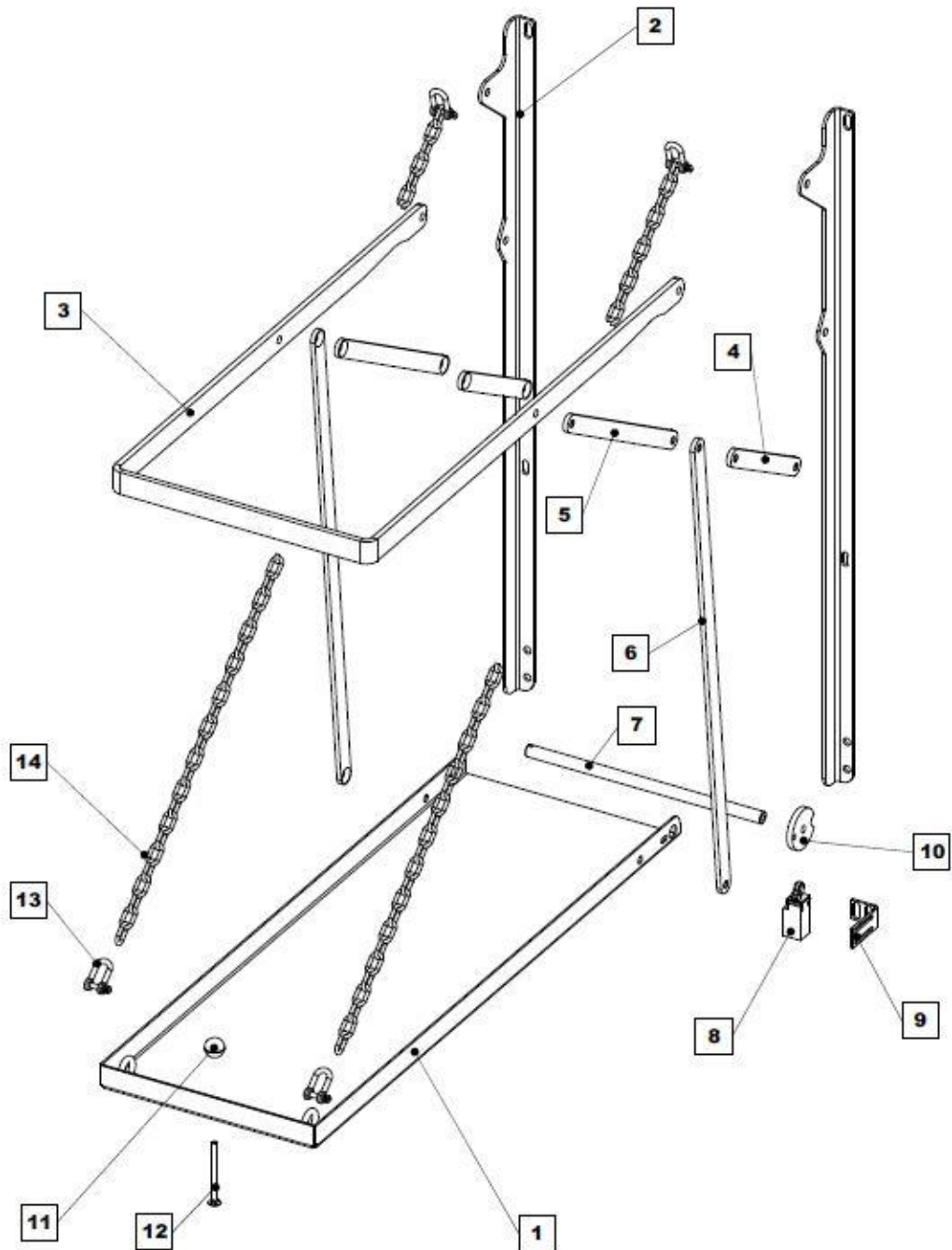


Item	Part Number	Description	Notes
-	10-788	Loading Ramp Complete, RT	---
-	10-789	Loading Ramp Complete, LT	---
1	10-795	Loading Ramp	---
2	10-691	Mount, Gate Hinge	---
3	10-464	Loading Gate Vertical Handle	---
4	10-514	Vertical Support Rail	---
5	10-891	Vertical Support Rail	---
6	10-515	Vertical Support Rail & Hinge, RT	---
7	10-526	Vertical Support Rail & Hinge, LT	---



Item	Part Number	Description	Notes
8	10-575	Threshold	---
9	10-261	Ramp Springs	---
10	10-576	Spring Bushings	---
11	10-577	Loading Ramp Hand Rail	---
12	10-466	Loading Ramp Cross Guard (R)	---
13	10-465	Loading Ramp Cross Guard (L)	---
14	10-666	Latching Pin Spring	---
15	10-578	Latch Bushing	---
16	10-579	Latch Cover	---
17	10-430	Loading Ramp Latch Handle	---
18	10-667	T-Handle Ball	---
19	10-580	Loading Ramp Horizontal Handle	---
20	10-581	Loading Ramp Limit Switch Cam	---
21	10-555	Loading Ramp Limit Switch	---
22	10-417	Gate Ramp Brace Rod	---
23	10-720	Threaded Insert	---
24	10-668	Ramp Heim Joint	---
25	30-245	RT Ramp Link	---
26	30-246	LT Ramp Link	---
27	30-244	Link Bushing	---
28	30-243	Ramp Hinge Lock	---

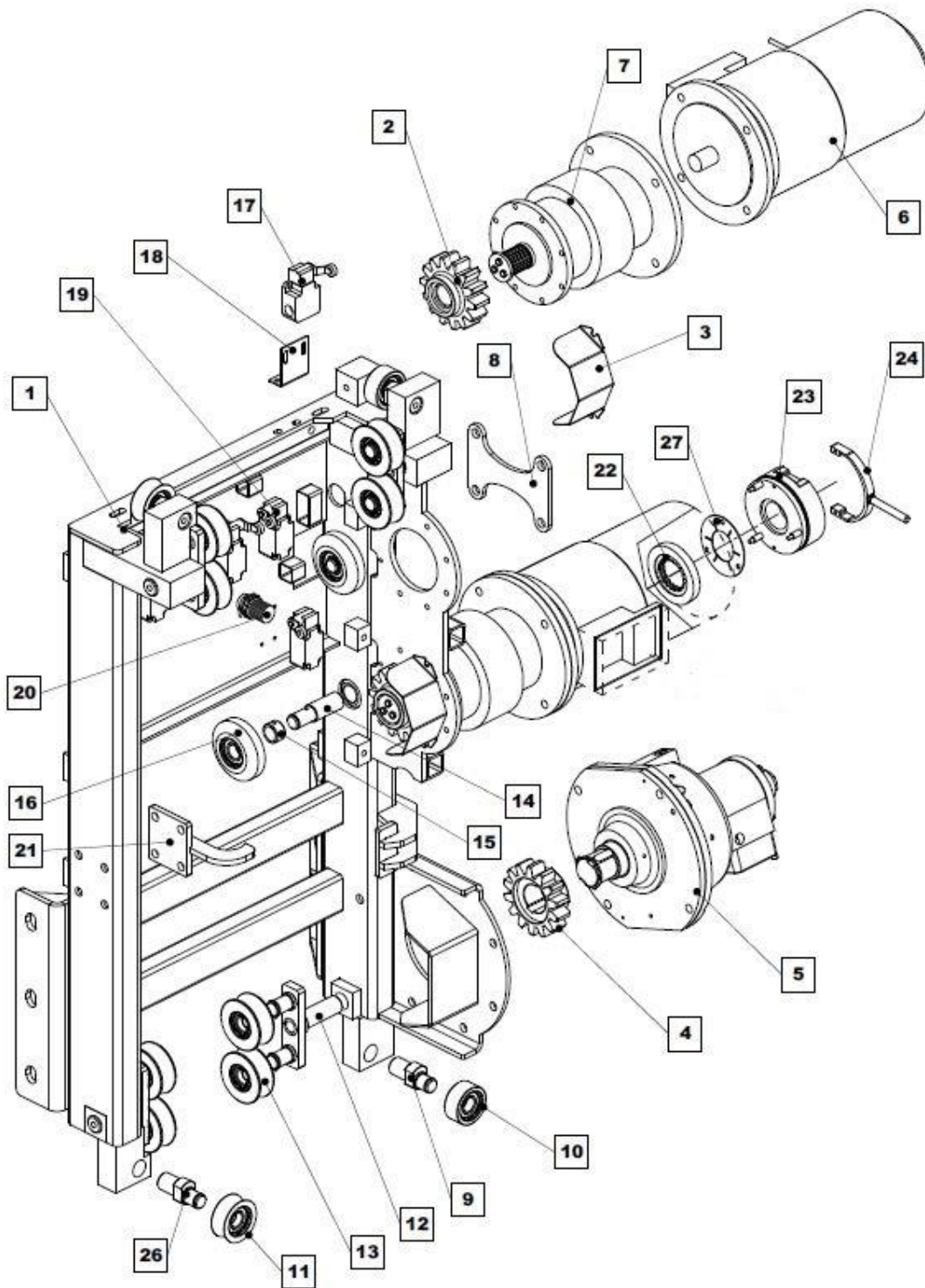
Erection Platform





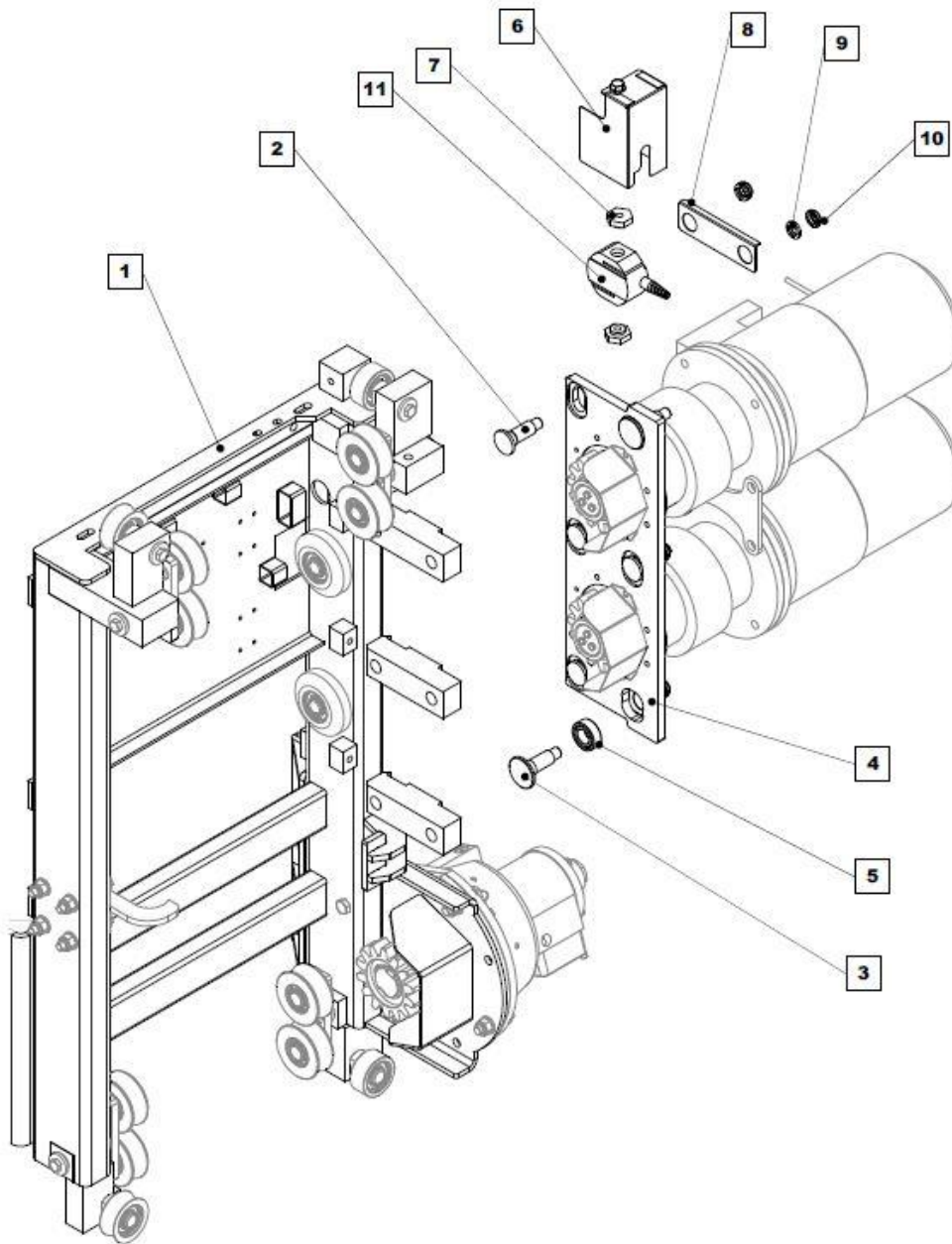
Item	Part Number	Description	Notes
1	10-730	Erection Platform	---
2	30-490	Mounting Bracket	---
3	30-491	Hand Rail	---
4	30-492	Actuator Link #1	---
5	30-493	Actuator Link #2	---
6	30-494	Actuator Link #3	---
7	30-495	Hinge Pin	---
8	10-555	Erection Platform Limit Switch	---
9	30-496	Limit Switch Mount	---
10	10-581	Limit Switch Rotating Cam	---
11	10-667	Handle Knob	---
12	30-498	Carriage Bolt	---
13	30-499	Chain Shackle	---
14	30-555	Chain	---

Section D – Lifting Unit



Item	Part Number	Description	Notes
1	##	Carriage	---
2	10-286	Motor Pinion Gear	---
3	##	Motor Pinion Dust Shield	---
4	10-714	Safety Brake Pinion Gear	---
5	10-726	Safety Brake	---
6	##	4.8Kw Motor	---
7	10-889	25:1 Transmission	---
8	##	Motor Spacer Bracket	---
9	10-293	Offset Guide Roller Pin	---
10	10-670	Guide Roller (Rack Side)	---
11	10-669	Guide Roller	---
12	10-292	Duel Guide Roller Bracket	---
13	10-671	Guide Roller	---
14	10-294	Straight Guide Roller Pin	---
15	10-295	Roller Spacer	---
16	10-500-3-2	Backup Roller	---
17	00000000001705	No Mast Limit Switch	---
18	10-396	No Mast Limit Switch BKT	---
19	00000000001707	Limit Switch (3M, Up, Down, OT)	---
20	10-500-3-4	Floor Stop Sensor	---
21	##	Safety Hook	---
22	10-432	MGM Brake Pad	---
23	10-289	Brake Coil (4.8kw MGM)	---
24	10-288	Brake Release Handle Yolk (4.8kw MGM)	---
26	10-925-4	Offset Guide Roller Pin	---
27	10-290	Brake Friction Pad	---

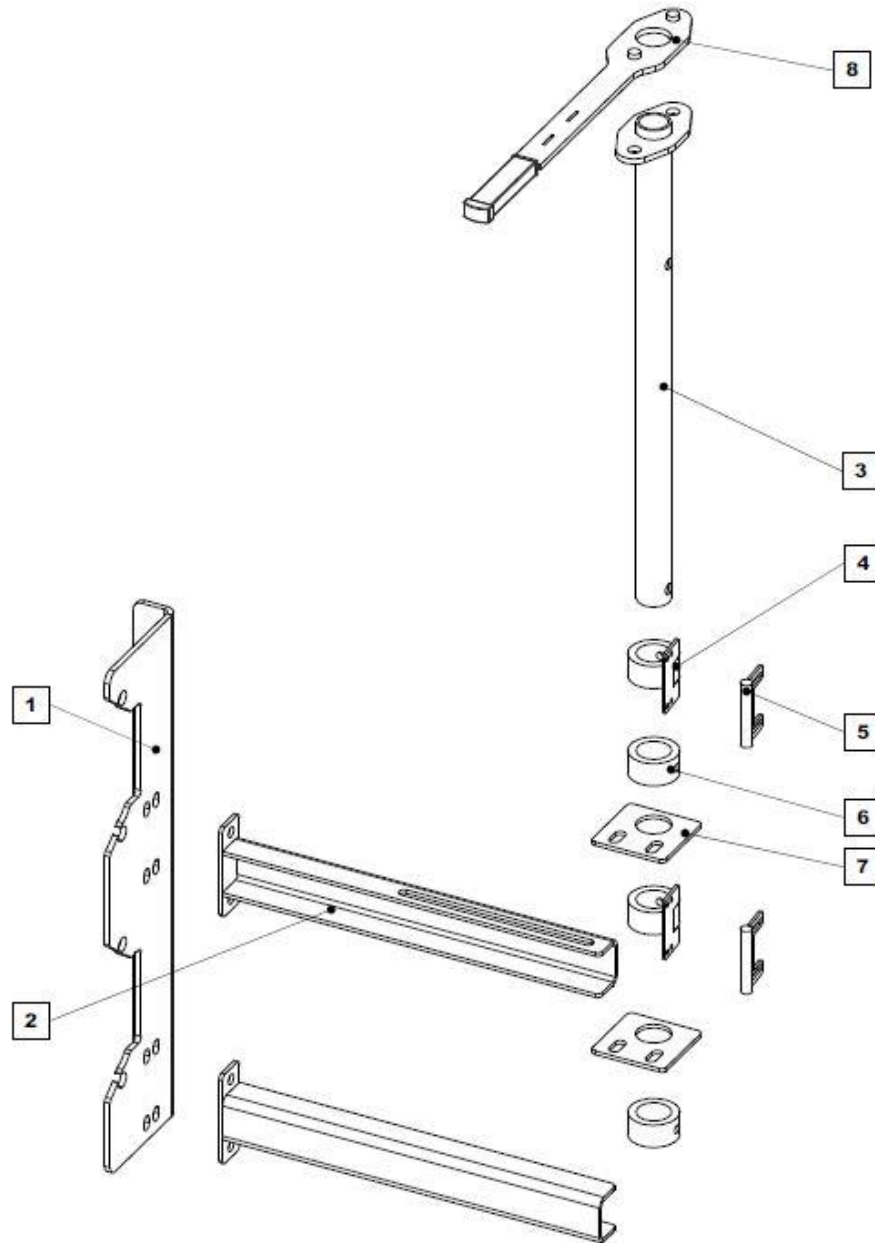
Motor Plate Assembly





Item	Part Number	Description	Notes
1	##	Lifting Unit Carriage	---
2	##	Motor Plate Attachment Bolt (Top)	---
3	##	Motor Plate Attachment Bolt (Bottom)	---
4	##	Motor Plate	---
5	##	Bearing	---
6	##	Load Cell Cover	---
7	---	Load Cell Spacer	(Not Sold Separately 30-232)
8	##	Load Cell Bracket	---
9	##	Castle Nut	---
10	##	Castle Nut	---
11	---	Load Cell	(Not Sold Separately 30-232)

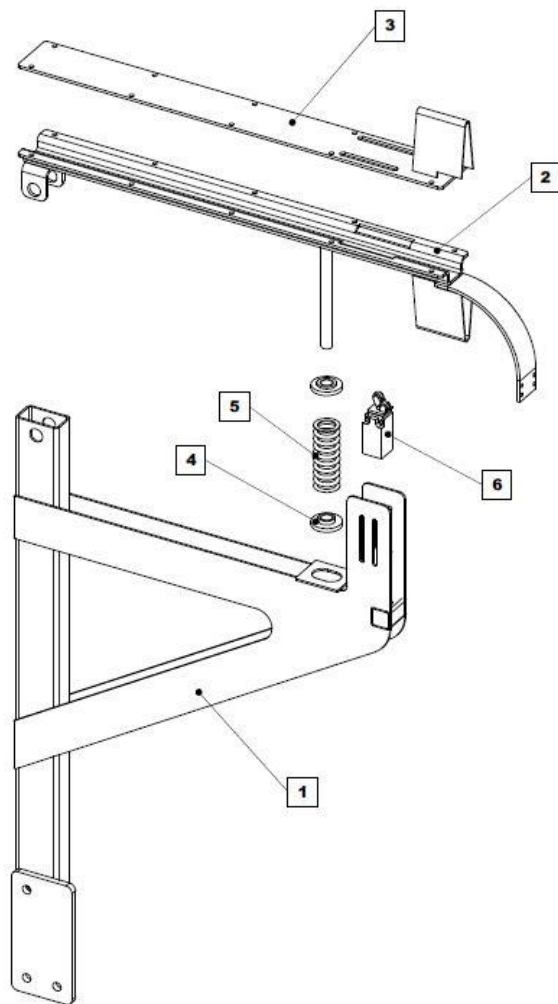
Emergency Decent System





Item	Part Number	Description	Notes
-	30-234	Emergency Decent Assembly	---
1	##	Vertical Mount	---
2	##	Horizontal Mount	---
3	##	Actuator Tube	---
4	##	Actuator Collar	---
5	##	Actuator Tab	---
6	##	Spacer Collar	---
7	##	Mounting Plate	---
8	30-386	Emergency Decent Handle	---

Cable Gooseneck Assembly

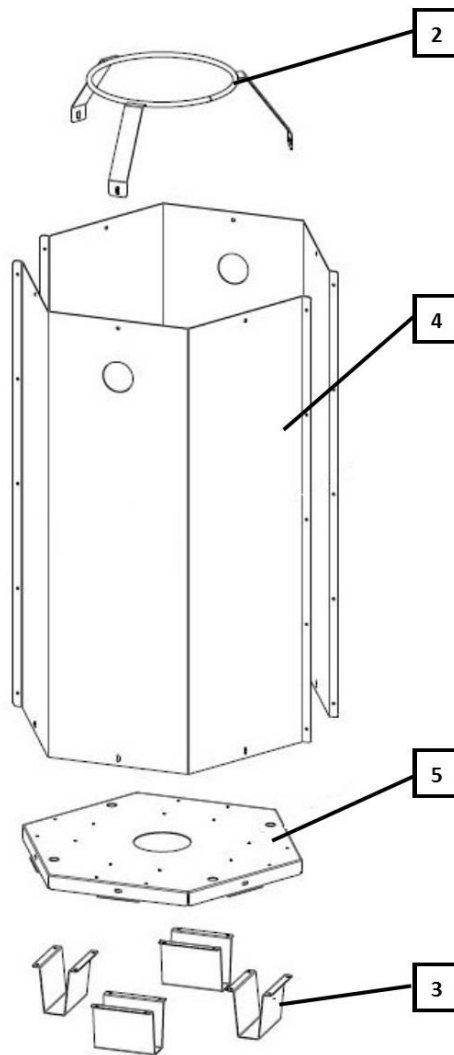


Item	Part Number	Description	Notes
-	30-497	Cable Gooseneck Assembly	Includes Hardware
1	10-799	Gooseneck Mount	---
2	10-775	Gooseneck	---
3	10-776	Gooseneck Cover	---
4	10-881	Spring Retainer	---
5	10-882	Spring	---
6	10-555	Limit Switch	---



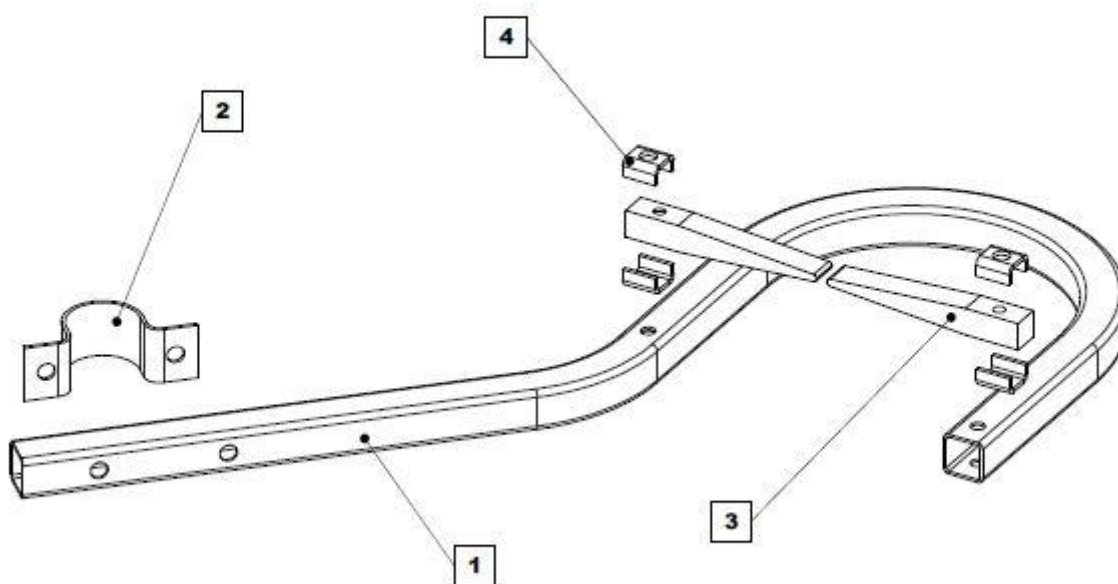
This page has been left blank for formatting purposes

Section E – Electric Cable Guide Unit
 Cable Collector



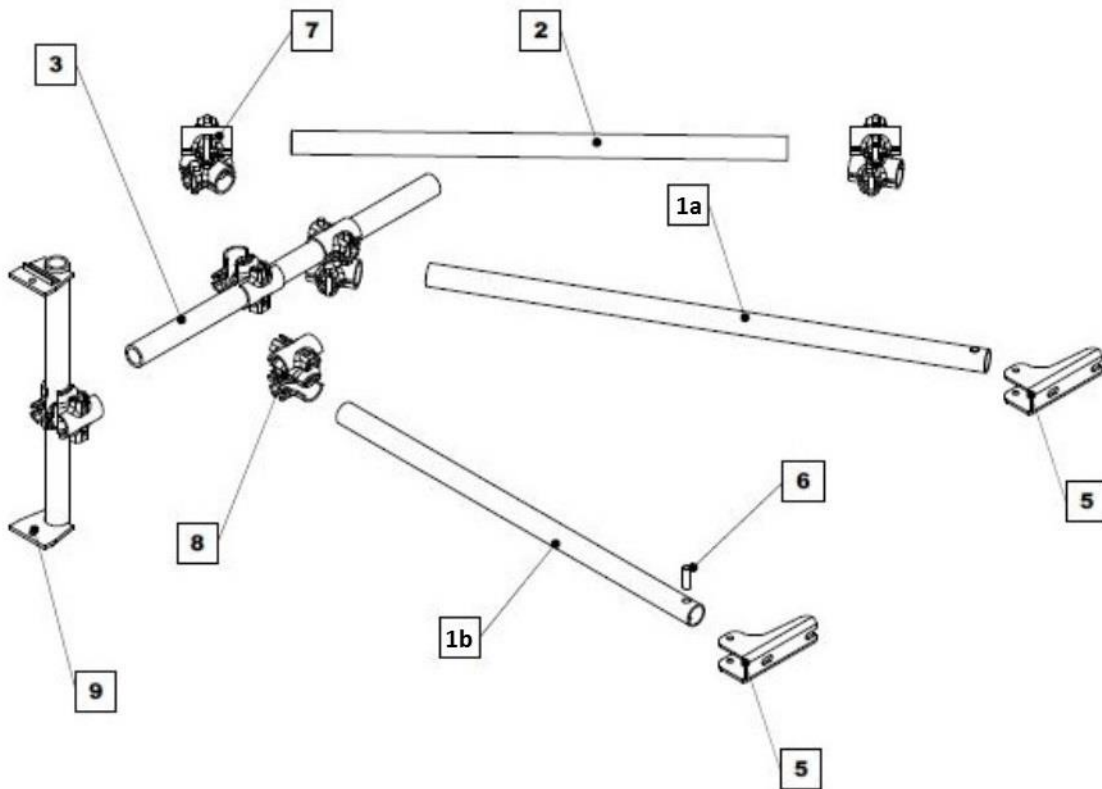
Item	Part Number	Description	Notes
-	10-235	Complete Cable Collector	Includes Items 2 Thru 5
2	10-888	Collector Ring	---
3	##	Feet	(Not Sold Separately) (10-235)
4	##	Cable Drum	---
5	##	Cable Drum Base	(Not Sold Separately) (10-235)

Cable Guide



Item	Part Number	Description	Notes
-	10-503	Cable Guide Assembly	Includes items 1 thru 4
1	##	Cable Guide Frame	---
2	##	Cable Guide Clamp	---
3	30-256	Cable Guide Fingers	---
4	##	Cable Guide Finger Keepers	---

Section F – Wall Tie Assembly



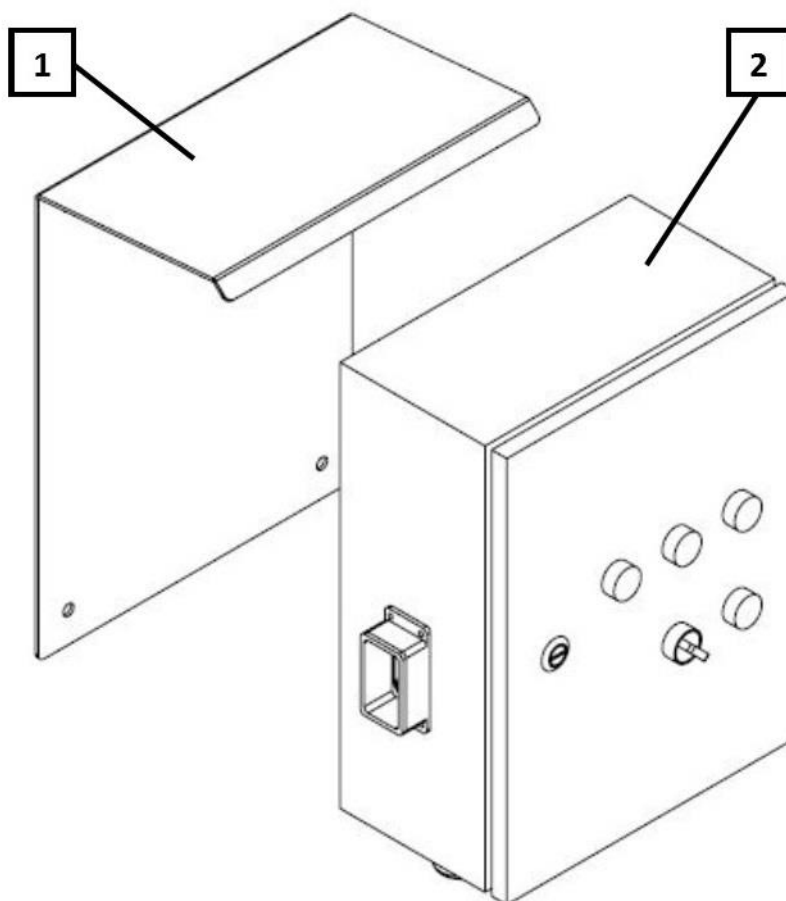
Item	Part Number	Description	Notes
-	30-536	Wall Tie Assembly	Includes Items 1a thru 9
1a	10-511	98" Wall Tie Pole with Foot	Includes Item 5
1b	10-510	78" Wall Tie Pole with Foot	Includes Item 5
2	10-509	59" Wall Tie Pole	---
3	10-508	33" HW Wall Tie Pole	---
5	10-221	Wall Tie Foot	---
6	---	Sleeve	(Not Sold Separately) (10-221)
7	10-518	Clamp, DBL Swivel	---
8	10-329	Clamp, Fixed	---
9	10-520	Mast Anchor Frame	---



This page has been left blank for formatting purposes

Section G – Electrical Control System

Ground Control System

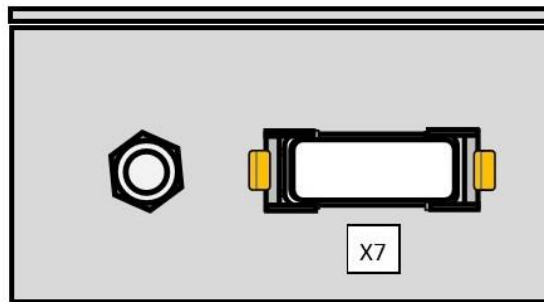
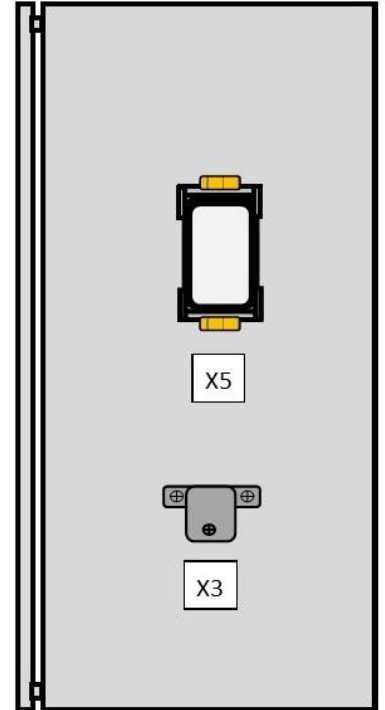
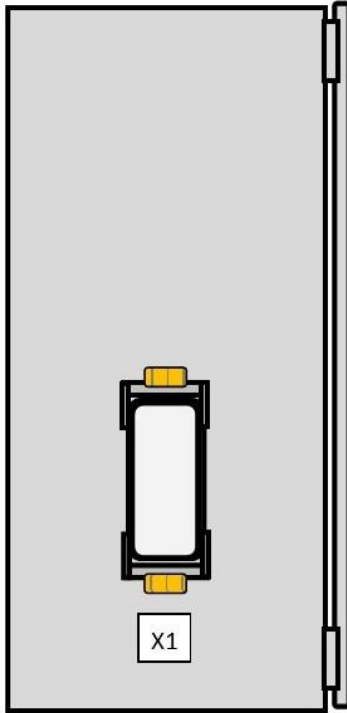


Item	Part Number	Description	Notes
-	30-2006E	Ground Control System	Includes Items 1 & 2
1	30-226	Mounting Bracket w/ Rain hood	---
2	30-2006E-1	Ground Controls Enclosure	---
3	30-967	Ground Control Pendant	Not Shown (Page 29)
4	30-968	Floor Call Box	Not Shown (Page 31)



This page has been left blank for formatting purposes

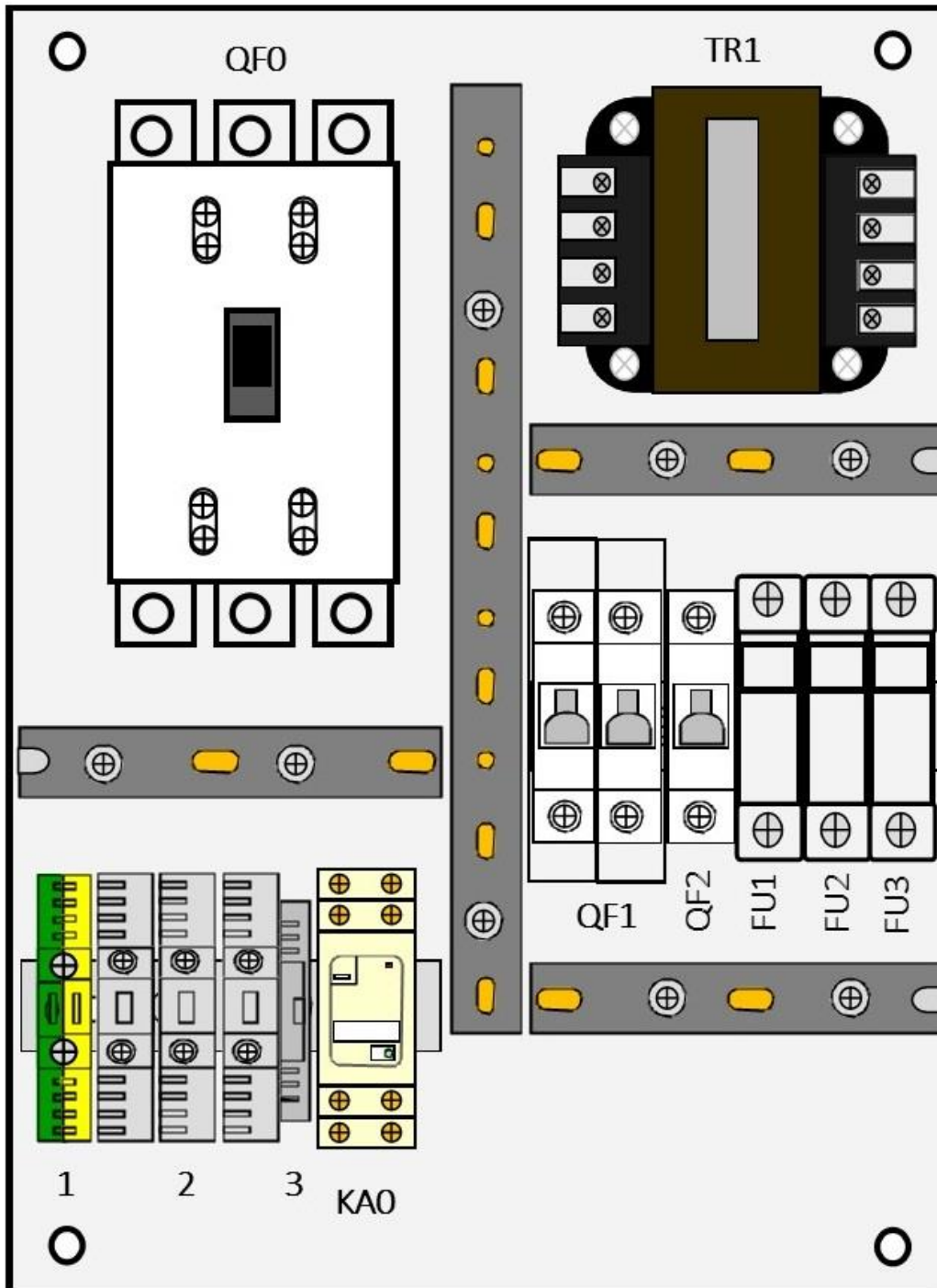
Ground Electrical Enclosure





Item	Part Number	Description	Notes
-	30-2006E-1	Ground Control Enclosure	Includes all items below
X1	00000000001869	Base 10B Bulkhead MTL DB Lever	---
X1	00000000001870	Insert 10B 10PL FM	---
X1	30-396	Control Pendant By-pass Plug	Not Shown
X3	00000000001876	Base 3A RT-ANG Bulkhead MT SNG Lever	---
X3	00000000001880	Insert 3A 3PL FM	---
X3	10-282	Ground Enclosure By-pass Plug	Not Shown
X5	00000000001871	Base 6B Bulkhead MT SNG Lever	---
X5	00000000001875	Insert 6B 6PL FM	---
X5	10-619	Call Box By-pass Plug	Not Shown
X7	00000000001860	Base 24B Bulkhead MT DB Lever	---
X7	00000000001862	Insert 24B 4-8 FM	---
HL11	00000000001845	Indicator Light 120VAC/BC BL	---
HL11	10-703-11	Legend Plate, Phase1 L1	---
HL12	00000000001845	Indicator Light 120VAC/DC BL	---
HL12	10-703-12	Legend Plate, Phase2 L2	---
HL13	00000000001845	Indicator Light 120VAC/DC BL	---
HL13	10-703-13	Legend Plate, Phase3 L3	---
HL14	00000000001844	Indicator Light 120VAC/DC GN	---
HL14	10-665-4	Legend Plate, Power	---
SA11	00000000001518	Keyed Selector Switch MNTND	---
SA11	00000000001519	N.C. Contact Block	---
SA11	10-703-1	Legend Plate, Mode	---

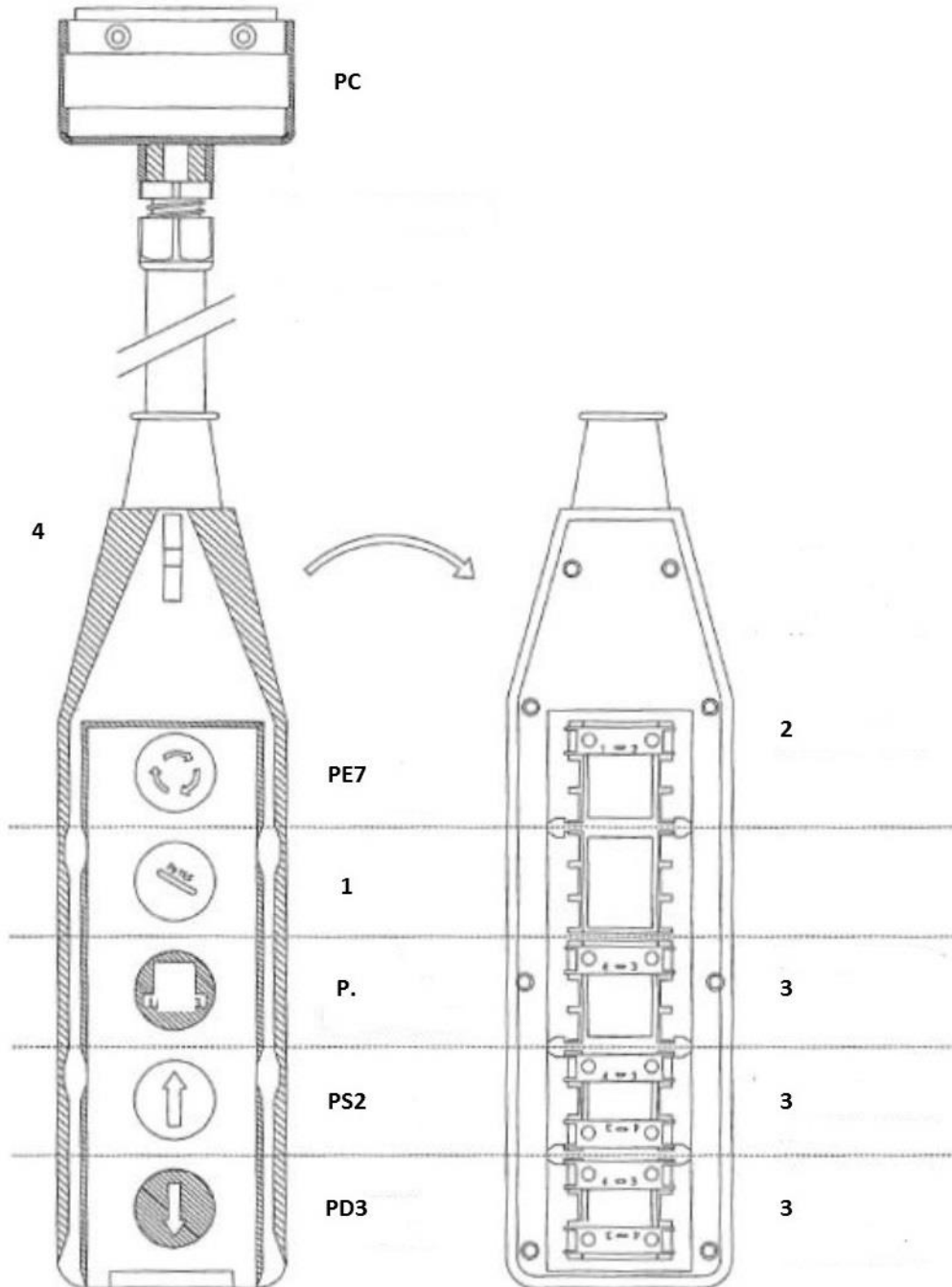
Baseplate – Ground Electrical Enclosure Baseplate





Item	Part Number	Description	Notes
-	30-2006E-2	Ground Enclosure Baseplate	Includes all items below
--	15-2006E	Baseplate	Not Sold Separately (30-2006E-2)
QF0	00000000001852	Circuit Breaker, 3P, 70A	---
TR1	10-543	Transformer 100VA	---
QF1	00000000001850	Circuit Breaker, 2P, 2A	---
QF2	00000000001848	Circuit Breaker, 1P, 2A	---
FU1	00000000001693	Fuse Holder CC Class	---
FU1	00000000001842	Fuse – CC Class 600Vac	---
FU2	00000000001693	Fuse Holder CC Class	---
FU2	00000000001842	Fuse – CC Class 600Vac	---
FU3	00000000001693	Fuse Holder CC Class	---
FU3	00000000001842	Fuse – CC Class 600Vac	---
KA0	00000000001598	Relay Base	---
KA0	00000000001841	Relay DPDT	---
1	00000000001975	Ground Terminal Block	---
2	00000000001974	Terminal Block	---
3	00000000001571	Terminal End Block	---

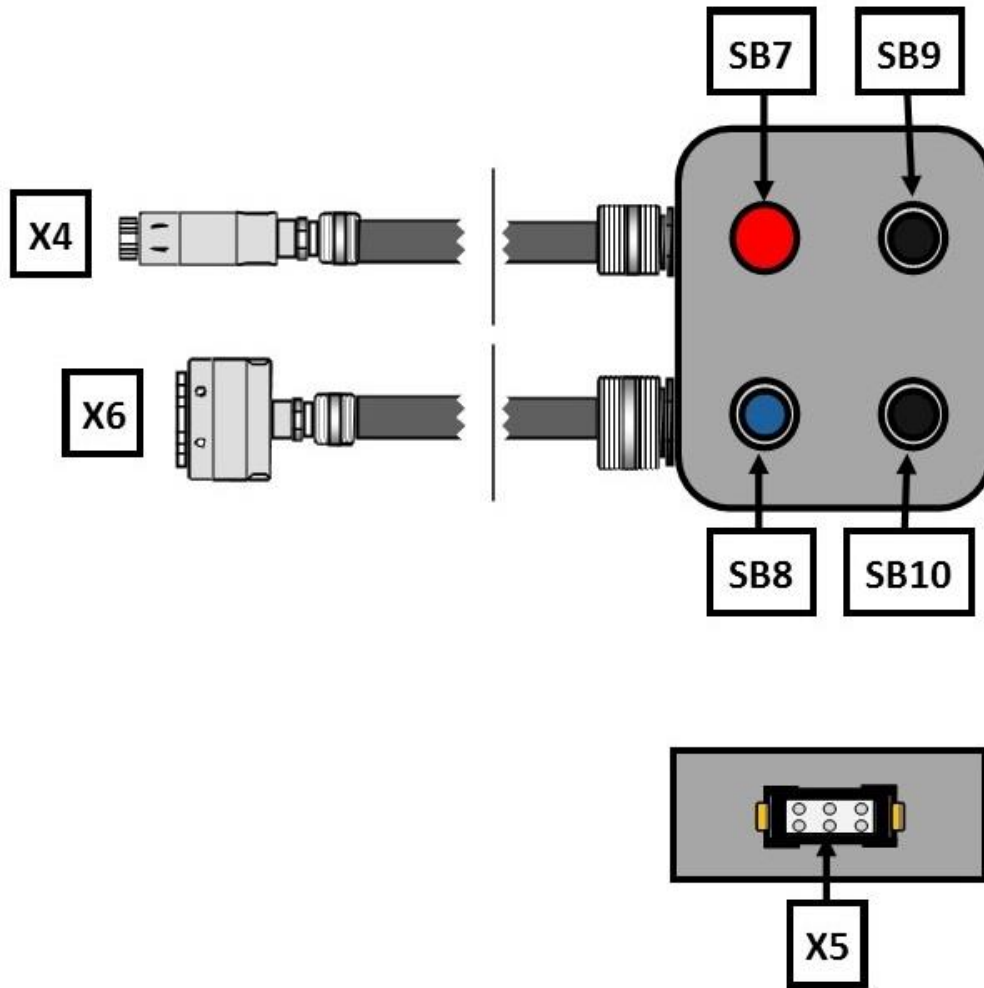
Control Pendant





Item	Part Number	Description	Notes
-	30-967	Ground Control Pendant	Includes all items below
PC	##	10B Hood Side Entry 4 Peg	---
PC	000000000000018	10B Insert Male	---
PE7	000000000001025	E-Stop Button	---
P.	000000000002115	Pushbutton	---
PS2	10-674	Pushbutton	---
PD3	10-675	Pushbutton	---
1	000000000002012	Hole Plug	---
2	000000000001730	N.C. Contact Block	---
3	10-678	N.O. Contact Block	---
4	---	Pendant Housing	Not Sold Separately (30-967)

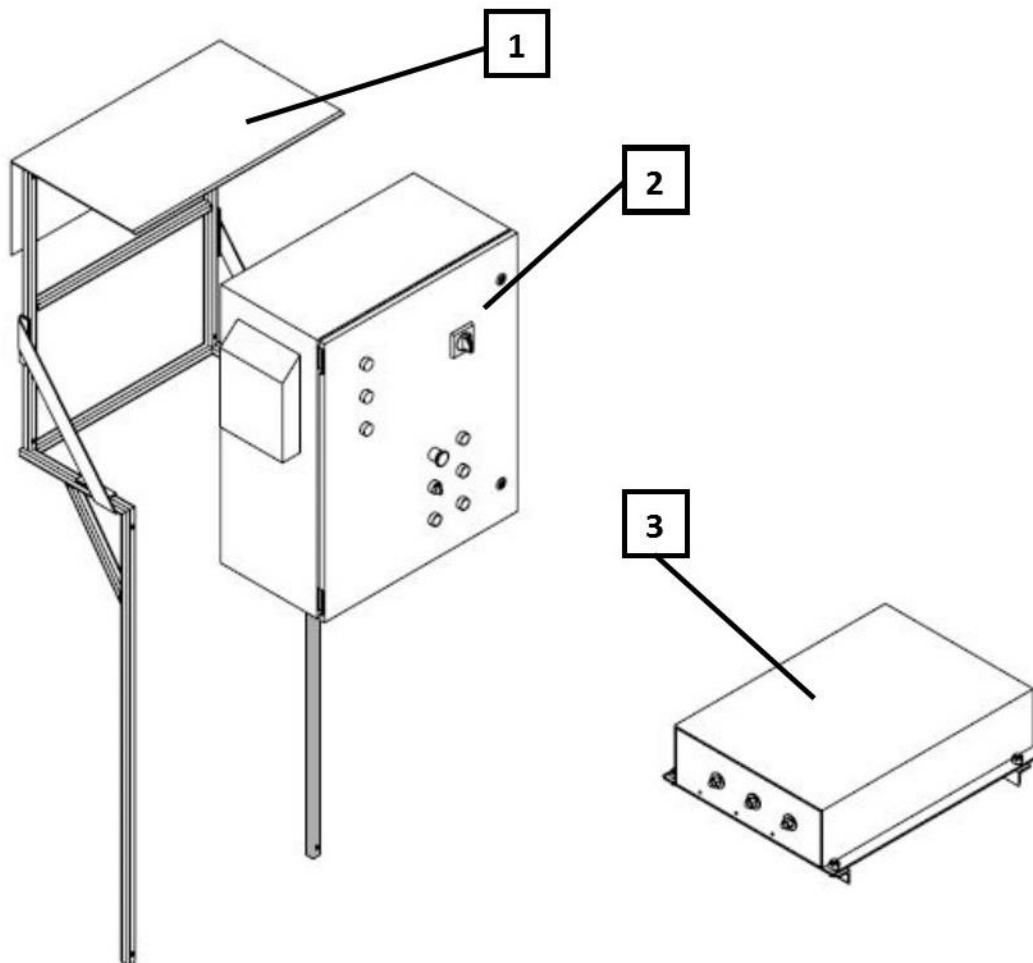
Floor Call Box





Item	Part Number	Description	Notes
-	30-968	Floor Call Box Assembly	Includes All Items Below
X4	00000000001286	Hood, Cable to Cable 4 Pin	---
X4	00000000000242	Insert 4B Female	---
X6	00000000001872	Hood 6B Top ENT PG16 MT SNGL	---
X6	00000000000831	Insert 6B 6 Pole Male	---
SB7	30-954	E-Stop Assembly	---
SB7	00000000001519	Contact Block N.C.	---
SB8	00000000001755	Pushbutton BLU	---
SB8	00000000001729	Contact Block N.O.	---
SB9	00000000001720	Pushbutton BLK	---
SB9	00000000001729	Contact Block N.O.	---
SB10	00000000001720	Pushbutton BLK	---
SB10	00000000001729	Contact Block N.O.	---
X5	00000000001871	Base 6B Bulkhead MT SNGL Lever	---
X5	00000000001875	Insert 6B 6 Pole Female	---

Cabin Controls System

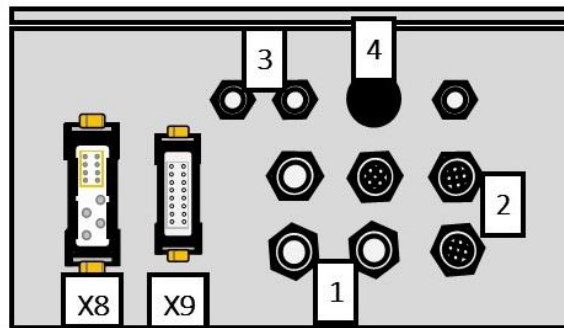
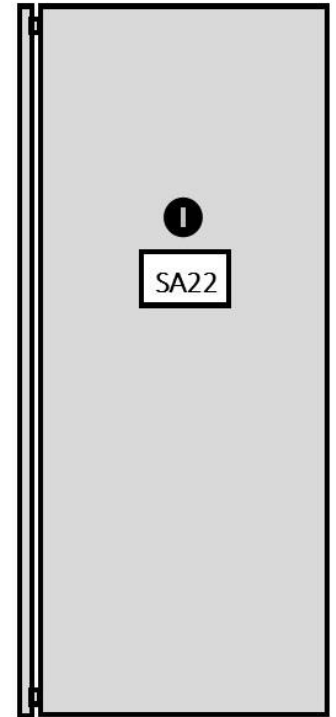
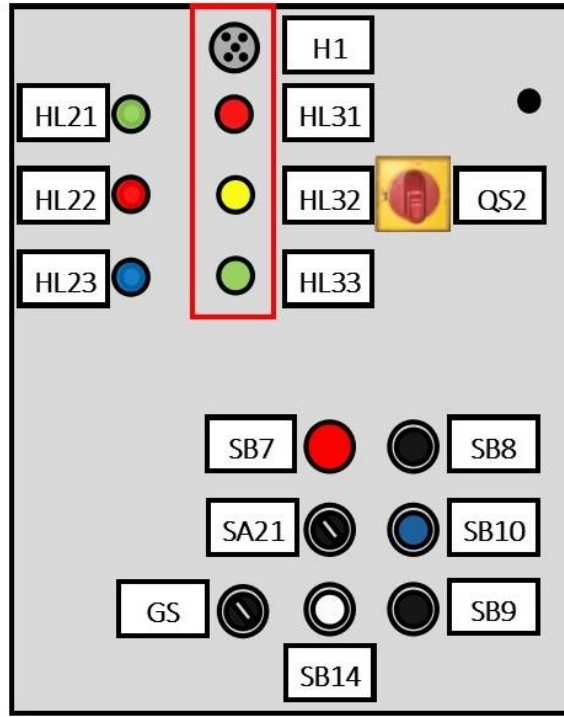
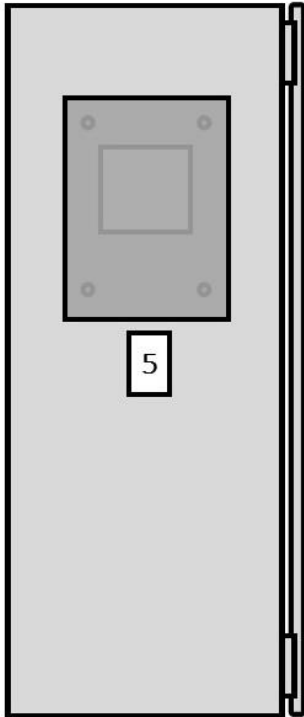


Item	Part Number	Description	Notes
-	30-2001E	Ground Control System	Includes Items 1 & 2
1	10-257	Mounting Bracket w/ Rain hood	---
2	30-2001E-1	Cabin Controls Enclosure	---
3	10-258	Resistor Bank	---
4	30-236	Drop Test Pendant	Not Shown (Page 43)



This page has been left blank for formatting purpose

Cabin Controls Enclosure





Item	Part Number	Description	Notes
-	30-2001E-1	Cabin Enclosure Assembly	Includes All Items Below
HL21	00000000001844	Indicator Light 120VAC/DC GRN	---
HL22	00000000001843	Indicator Light 120VAC/DC RED	---
HL23	00000000001845	Indicator Light 120VAC/DC BLU	---
SB7	30-954	E-Stop Assembly	---
SB7	00000000001519	N.C. Contact Block	---
SA21	00000000001518	Keyed Selector Switch MNTND	---
SA21	00000000001519	N.C. Contact Block	---
SB14	00000000001838	Pushbutton WHT	---
SB14	00000000001729	N.O. Contact Block	---
SB8	00000000001720	Pushbutton BLK	---
SB8	00000000001729	N.O. Contact Block	---
SB10	00000000001755	Pushbutton BLU	---
SB10	00000000001729	N.O. Contact Block	---
SB9	00000000001720	Pushbutton BLK	---
SB9	00000000001729	N.O. Contact Block	---
GS	00000000002139	Selector Switch	---
GS	00000000002140	Switch Base	---
GS	00000000002073	N.O. Contact Block	---
SA22	00000000001839	Keyed Selector Switch Spring	---
SA22	00000000001729	N.O. Contact Blocks (2)	---
QS2	00000000001837	Disconnect Switch 600V 80A	---
QS2	10-216	Wire Holding Bracket, Door	---
H1	00000000001925	Audible Siren	Optional
HL31	00000000001843	Indicator Light RED	Optional
HL32	00000000001924	Indicator Light YLW	Optional

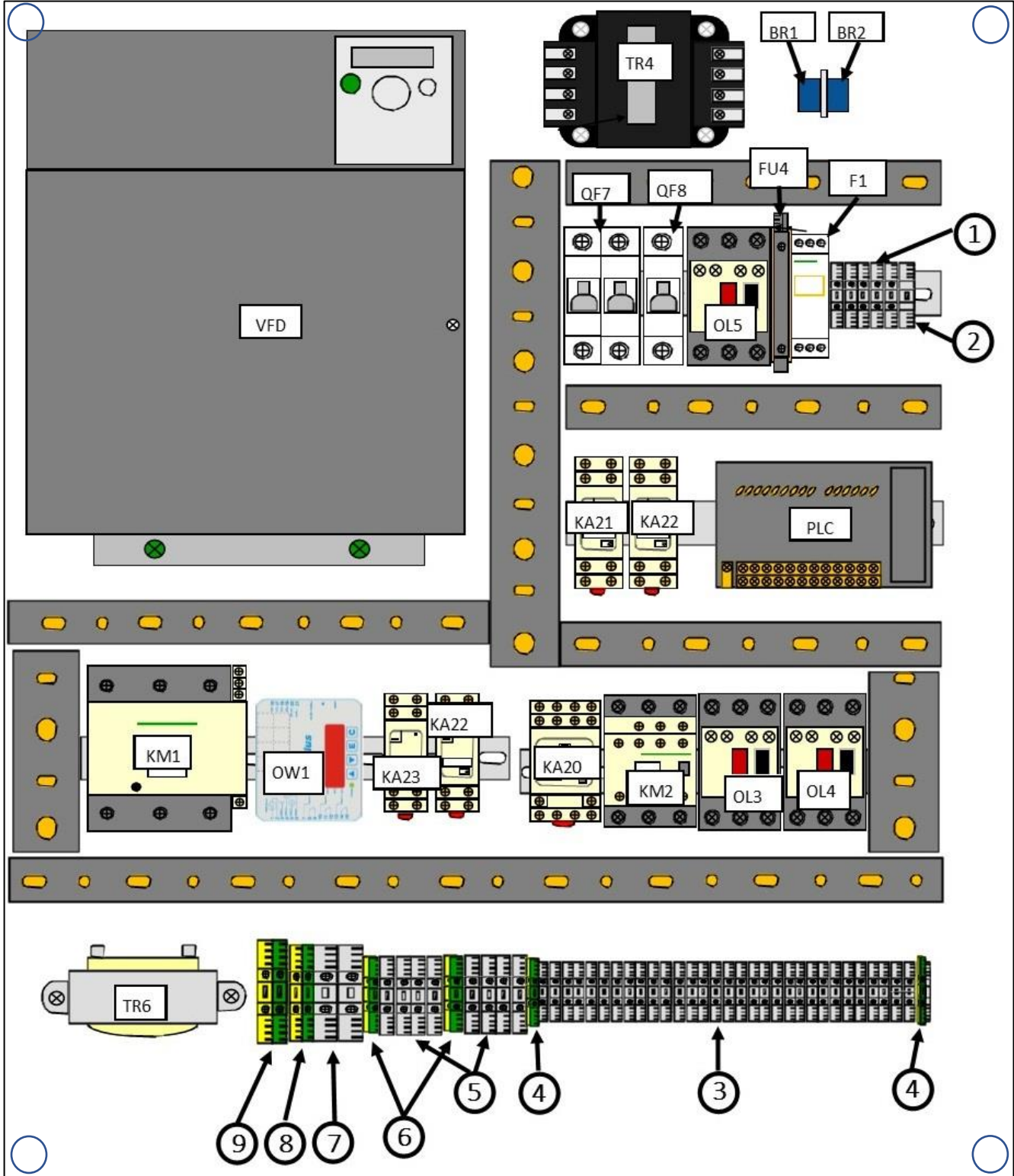


Item	Part Number	Description	Notes
HL33	00000000001844	Indicator Light GRN	Optional
X8	00000000001860	Base 24B Bulkhead MT DB Lever	---
X8	00000000001861	Insert 24B 4-8 Male	---
X9	00000000001864	Base 16B Bulkhead DBL Lever	---
X9	00000000001867	Inert 16B 16 Pole Male	---
X9	30-273	Drop-test Pendant By-pass Plug	Not Shown
1	00000000001856	Cord Connector PG29	---
1	00000000001859	PG29 Nylon Thread Lock Nut	---
2	00000000001857	Cord Connector PG29 w/ 4@.35"	---
2	00000000001859	PG29 Nylon Thread Lock Nut	---
3	00000000000178	Cord Connector PG16	---
4	00000000001925	Audible Siren	---
5	00000000001617	Vent w/ Filter	---
5	00000000001619	Rain Hood	---
5	10-195	Wire Holding Bracket, Enclosure	---



This page has been left blank for formatting purpose

Cabin Control System





Item	Part Number	Description	Notes
--	30-2001E-2	Baseplate Assembly	---
--	15-2001E	Baseplate	Not Sold Separately (30-2001E-2)
VFD	00000000001468	Drive, Speed 208V-240V 15HP	---
TR4	00000000001834	Transformer 240/480 – 120 250VA	---
BR1	00000000001618	Rectifier, Brake	---
BR2	00000000001618	Rectifier, Brake	---
QF7	00000000001851	Circuit Breaker 2P, 3A	---
QF8	00000000001849	Circuit Breaker 1P, 4A	---
OL5	00000000001635	Overload, Motor Start	---
OL5	00000000001709	Manual Starter AUX Contact	---
FU4	00000000001561	Fuse Terminal Block	---
FU4	00000000000474	Fuse 1A SLO-BLO	---
F1	00000000001832	Phase Monitor - DPDT	---
1	00000000001590	Terminal Block 20A 12AWG 600V	---
2	00000000001571	Terminal End Block	---
KA21	00000000001598	Relay Socket 782/AD-70S2 SQ	---
KA21	00000000001841	Relay 120Vac DPDT 15a LED Test	---
KA22	00000000001598	Relay Socket 782/AD-70S2 SQ	---
KA22	00000000001841	Relay 120Vac DPDT 15a LED Test	---
PLC	10-724	PLC Assembly	---
KM1	00000000001854	Contactor 600VAC, 80A	---
OW1	30-231	Overweight Computer	Optional (Not Sold Separately 30-232)
KA23	00000000001598	Relay Socket 782/AD-70S2 SQ	Optional
KA23	00000000001841	Relay 120Vac DPDT 15a LED Test	Optional
KA22	00000000001598	Relay Socket 782/AD-70S2 SQ	---
KA22	00000000001841	Relay 120Vac DPDT 15a LED Test	---

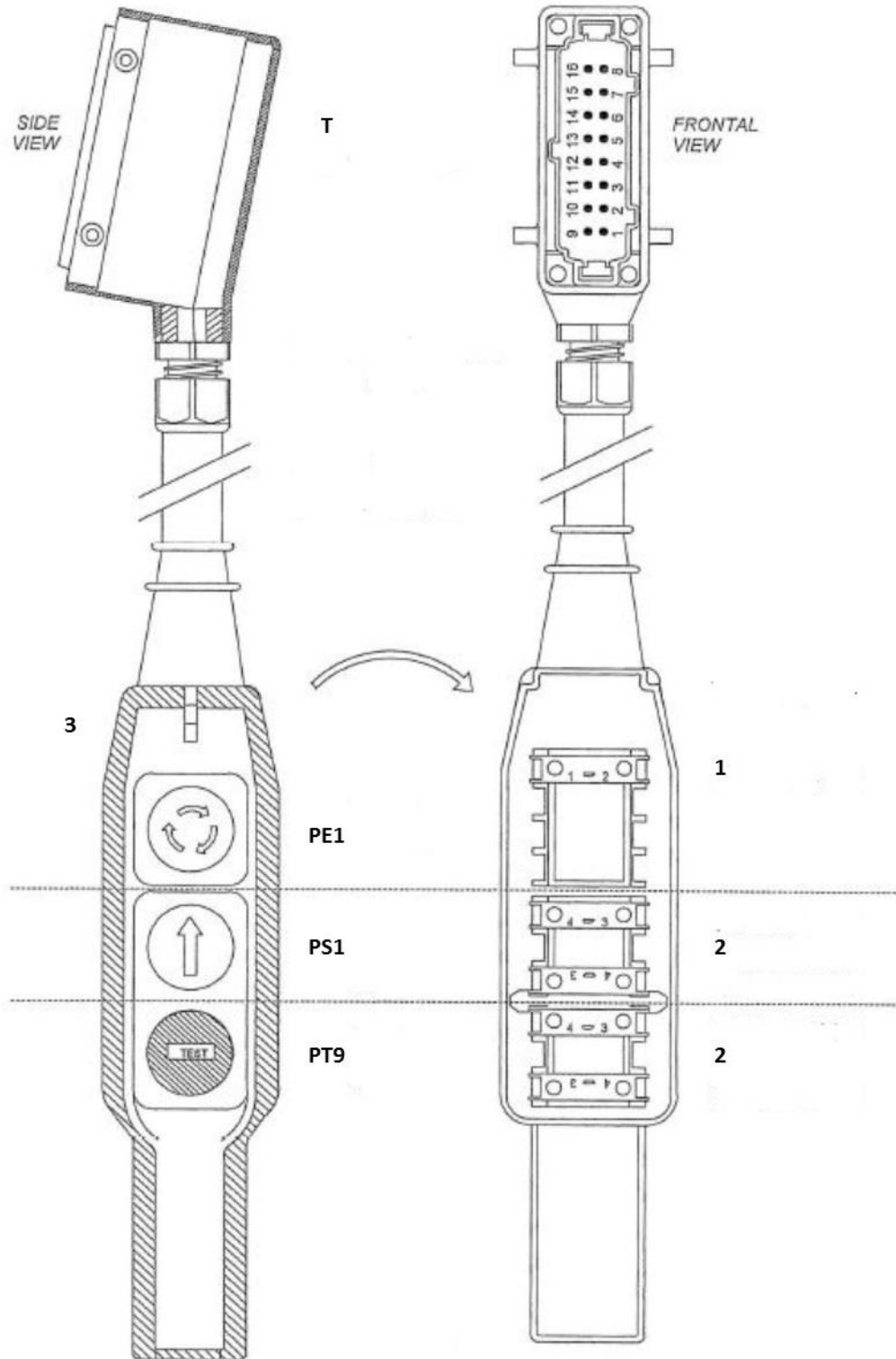


Item	Part Number	Description	Notes
KA22	00000000001840	MOV 782 Series 120V Plug In	---
KA20	00000000001894	Relay Socket 784	---
KA20	00000000001893	Relay 120Vac 4pDT 15a LED Test	---
KM2	00000000001361	Contactor	---
KM2	00000000001833	Auxiliary Contact – 4 N.O.	---
OL3	00000000001635	Overload, Motor Start	---
OL3	00000000001709	Manual Starter AUX Contact	---
OL4	00000000001635	Overload, Motor Start	---
OL4	00000000001709	Manual Starter AUX Contact	---
TR6	10-725	Transformer Assembly	---
3	00000000001590	Terminal Block 12AWG 600V	---
4	00000000001594	Ground Terminal Block	---
5	00000000001591	Terminal Block 8AWG 50A 600V	---
6	00000000001594	Ground Term Block 8AWG	---
7	00000000001847	Terminal Block 4AWG	---
8	00000000001846	Ground Term Block 4AWG	---
9	00000000001975	Ground Term Block 1/0AWG	---



This page has been left blank for formatting purpose

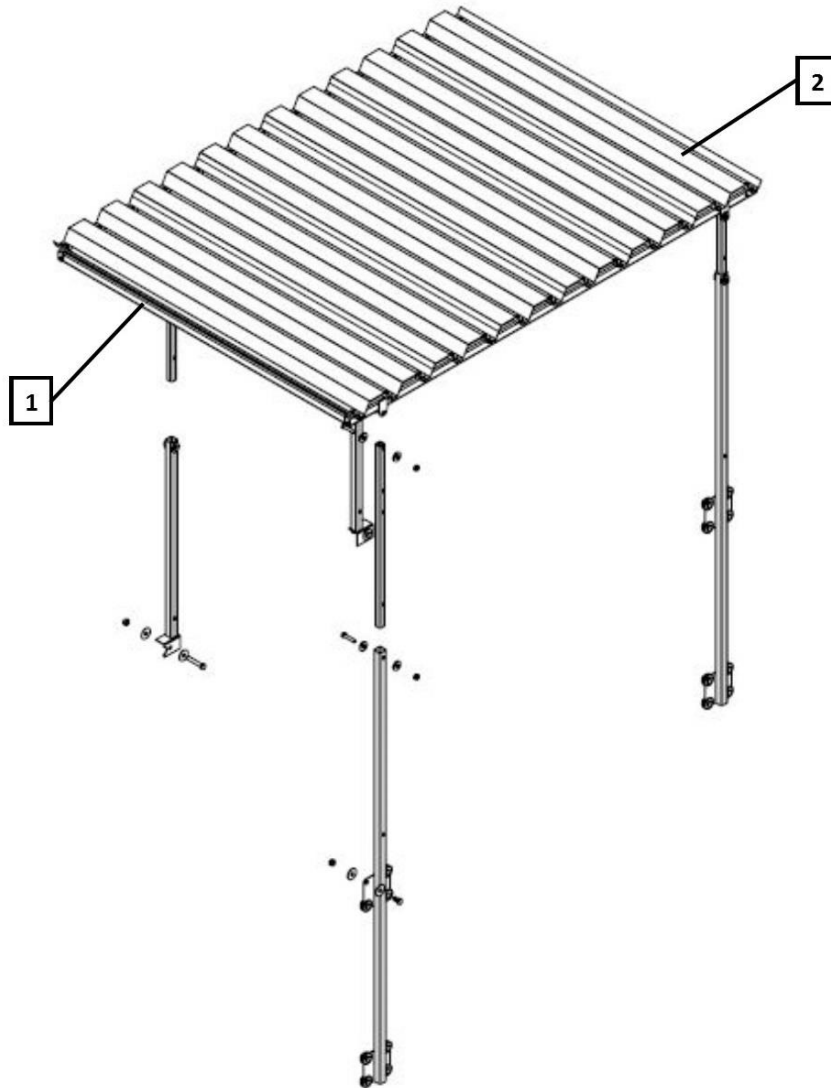
Drop Test Pendant





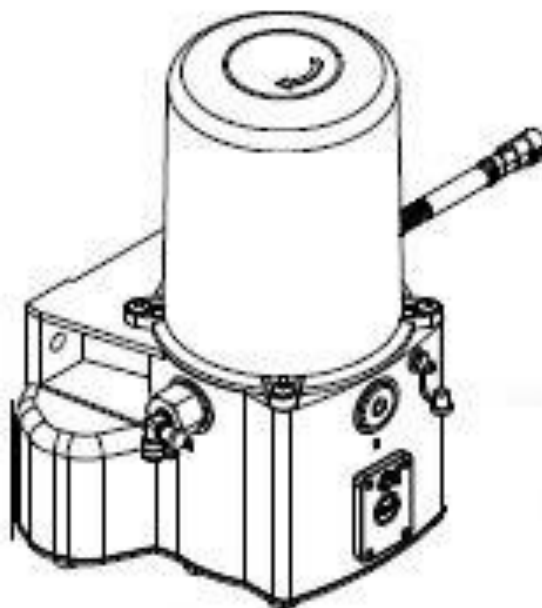
Item	Part Number	Description	Notes
-	30-236	Drop Test Pendant Assembly	---
T	00000000001865	16B Hood Side Entry	---
T	00000000001866	16B Insert Male	---
PE1	00000000001025	E-Stop Pushbutton	---
PS1	10-674	Pushbutton	---
PT9	##	Pushbutton	---
1	00000000001730	N.C. Contact Block	---
2	10-678	N.O. Contact Block (x2)	---

Section – H Accessories
Roof Structure



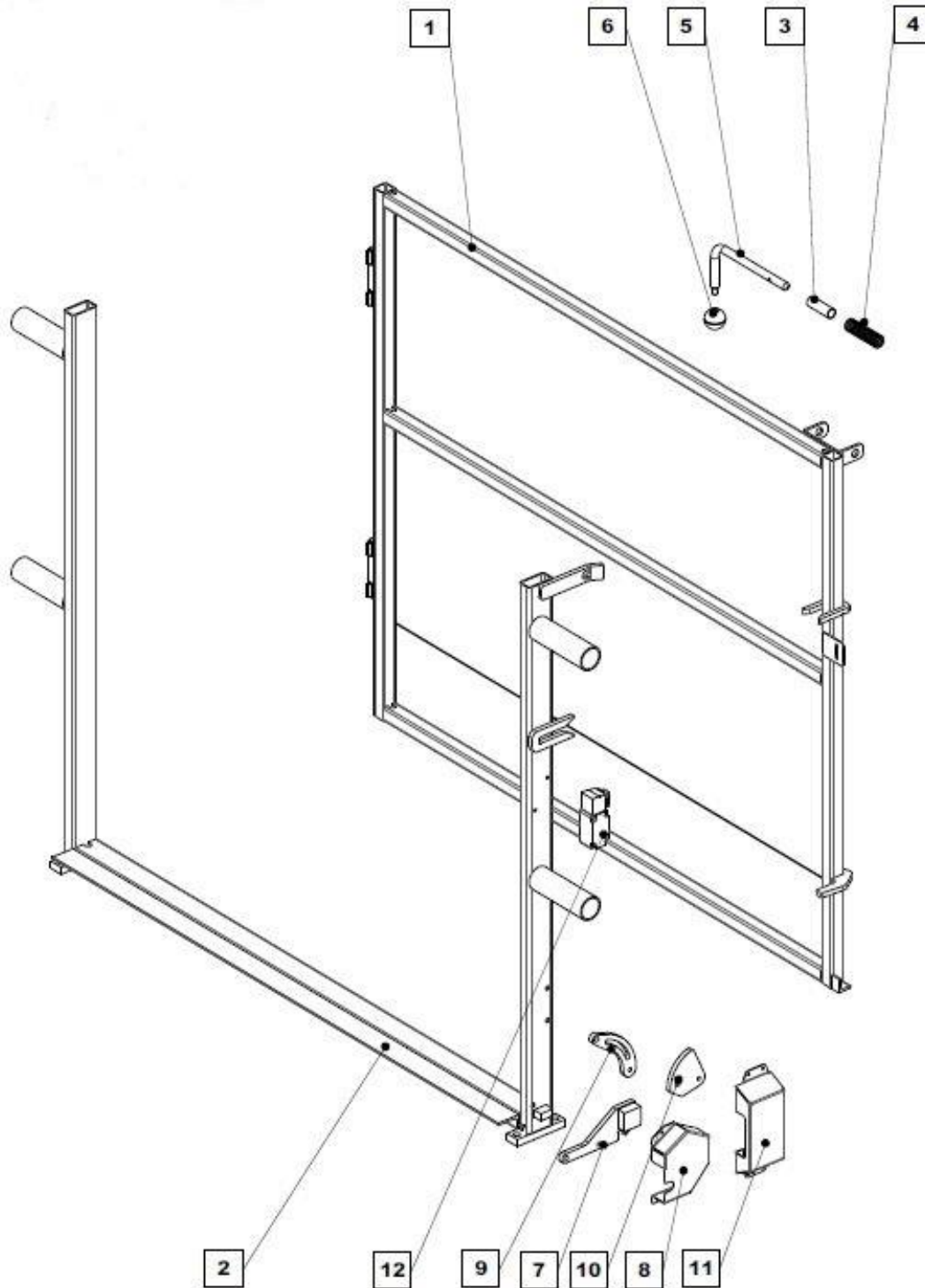
Item	Part Number	Description	Notes
-	10-227	Roof Structure	Includes item 1 & all Hardware
1	10-233	Roof Panel	6 Panels Needed

Automatic Greaser



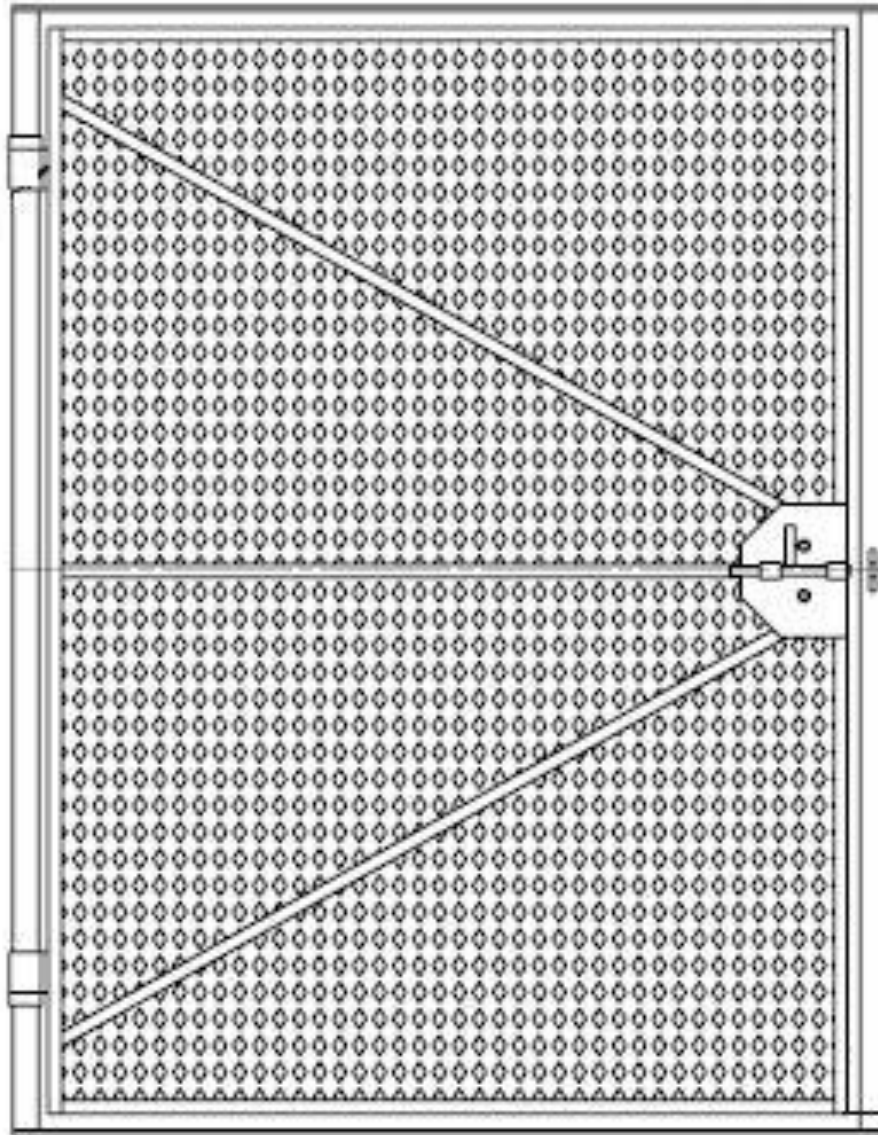
Item	Part Number	Description	Notes
1	10-757	Automatic Greaser	----

Transport Landing Gate



Item	Part Number	Description	Notes
-	10-997	Transport Landing Gate	Includes items 1 thru 12
1	##	Gate	---
2	##	Gate Frame	---
3	##	Latch Bushing	---
4	##	Latch Spring	---
5	30-251	Latch	---
6	30-252	Threaded Ball	---
7	30-253	Lock	---
8	30-254	Lock Cover	---
9	##	Secondary Lock Actuator	---
10	##	Secondary Lock	---
11	##	Cover	---
12	##	Keyed Limit Switch	---
--	30-338	Gate Hinge	Not Shown

Material Landing Gate



Item	Part Number	Description	Notes
1	20-100	Material Landing Gate	----

