

Beta Max, Inc.

Wireless System

Transmitter Registry Procedure

BETA2 to Present Firmware Systems



WARNING

This procedure is to be used ONLY on wireless systems programmed to the specifications of Beta Max, Inc. and should ONLY be performed by a competent person after full understanding of this document. Failure to fully understand the warnings and procedure of this document could lead to serious injury and/or death.

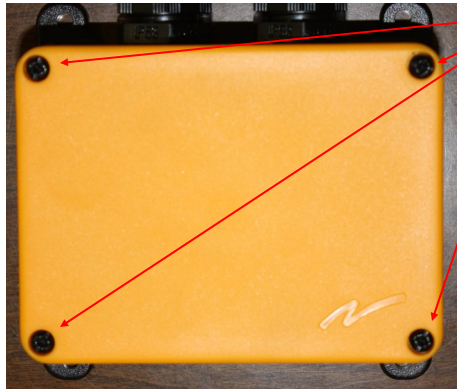
The new Beta Max wireless system has the capabilities to have any of the new Beta Max transmitters registered to any of the new Beta Max receivers. **Fully read and understand the warnings and procedures described in this document before any work is to be done to a Beta Max wireless system. Work performed to a Beta Max wireless system by a non-competent individual without a full understanding of this document could lead to serious injury and/or death.**

*****WARNING: THE BETA MAX WIRELESS SYSTEM CAN ONLY HAVE TWO(2) BETA MAX TRANSMITTERS REGISTERED TO ONE(1) RECEIVER AT A TIME. THE REGISTRY OF MORE THAN TWO(2) TRANSMITTERS TO ONE(1) RECEIVER WILL CAUSE A REGISTRY ERROR IN THE RECEIVER.**

*****WARNING: IF A BETA MAX TRANSMITTER IS REGISTERED TO A RECEIVER AND THEN REGISTERED TO A SECOND RECEIVER, IT IS POSSIBLE THAT ONE TRANSMITTER COULD OPERATE TWO(2) RECEIVERS AT THE SAME TIME. DUE TO THIS SITUATION, BETA MAX REQUIRES THAT THE TRANSMITTER REGISTRY BE ERASED IN BOTH RECEIVERS BEFORE SWITCHING TRANSMITTERS FROM ONE RECEIVER TO ANOTHER. AFTER A REGISTRY ERASE THE PROPER TRANSMITTERS ARE TO BE REGISTERED TO THE APPROPRIATE INDIVIDUAL RECEIVERS**

- Step 1** - Turn **OFF** all power to the Beta Max control box and the power of the Beta Max wireless transmitters by pressing the “**OFF/STOP**” button
- Step 2** - Remove the yellow cover of the wireless receiver by turning the four(4) corner screws a 1/4 of a turn as shown in Picture 1.1.

Picture 1.1

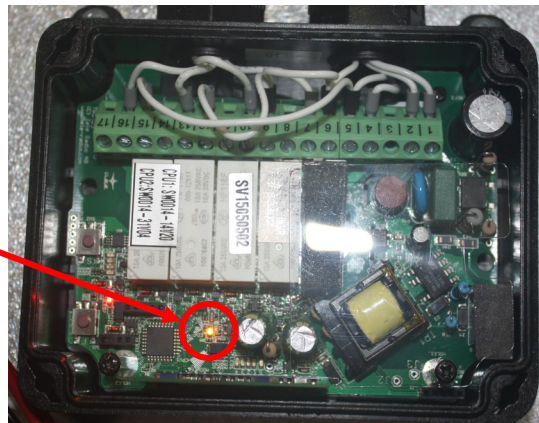


Four(4) corner
screws of wireless
receiver

- Step 3** - Plug in the control box and verify that the wireless receiver has power. Yellow LED 6 on the relay board will be lit when power is **ON**. Shown in Picture 1.2.

***** Warning - Registry process is performed while electricity is present in receiver, use extreme caution to avoid electrical shock *****

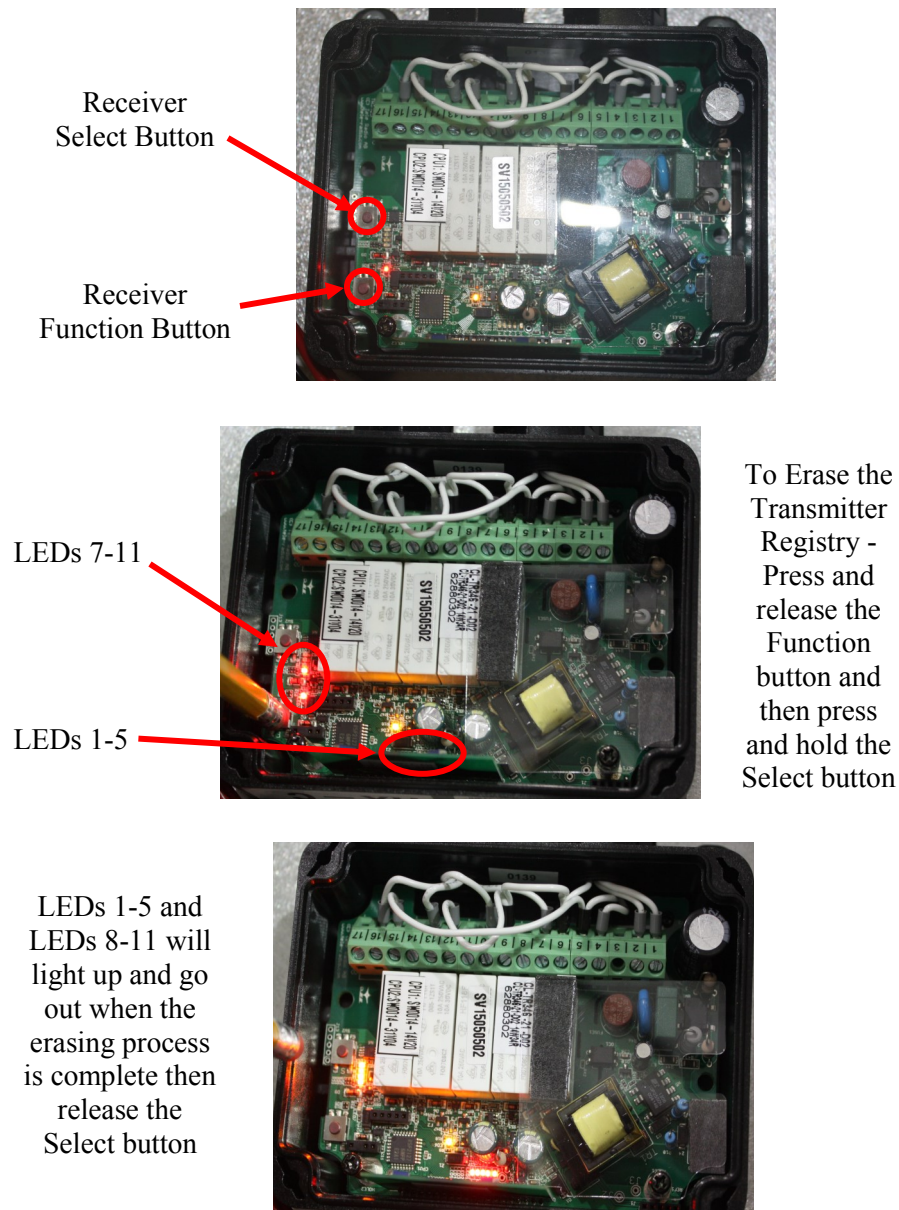
Picture 1.2



LED 6 on
Relay Board

- Step 4** – Press and release the receiver **FUNCTION** button and the LED 7 will light up. Press and hold the receiver **SELECT** button until all LEDs light up and go out. Release the receiver **SELECT** button. All transmitters are erased from the receiver. To ensure that the transmitter registry has been erased the red LED 8 should not be **ON** or **FLASHING** at this time. If LED 8 is functioning in any manner then repeat this step until the red LED 8 is not **ON** or **FLASHING**. Referenced in Picture 1.3.

Picture 1.3



Step 5 - After the transmitter registries are erased in the receiver, turn on one(1) transmitter by switching the switch on the back of the transmitter in the **ON (“I”)** position and then pressing the “**ON/START**” button.

Step 6 - Press the receiver **FUNCTION** button and release until red LED 7 lights up solid. Shown in Picture 1.4

Picture 1.4

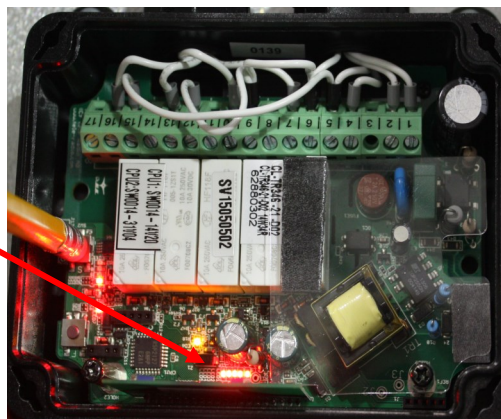
LED 7



Step 7 - Press the receiver **SELECT** button and release while the red LED 7 is lit solid until LEDs 1-5 light up. Shown in Picture 1.5.

Picture 1.5

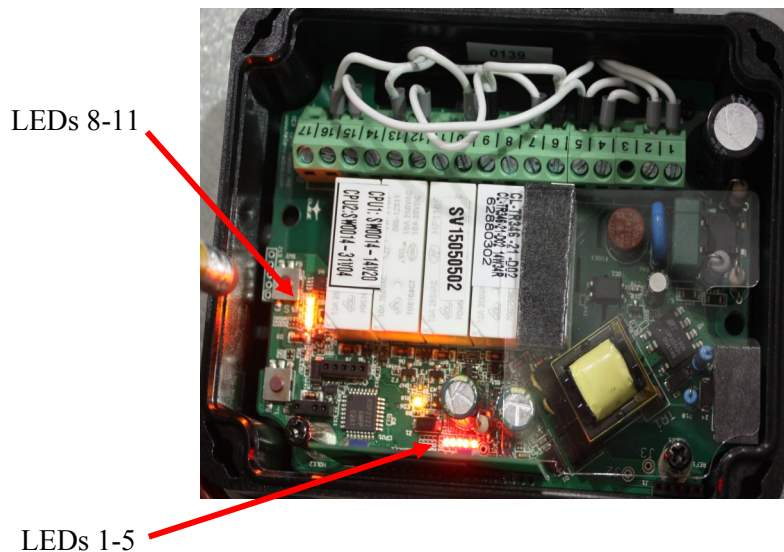
LEDs 1-5



Step 8 – While the LEDs 1-5 are lit, Press the **UP Slow** and **DOWN Slow** buttons at the same time to only the **FIRST STAGE** of the button of the transmitter and hold. Once LEDs 1-5 and 8-11 flash release the buttons and the transmitter has been successfully registered in the receiver. Referenced in Picture 1.6.

***** If you press the buttons too hard to the second stage, the transmitter will not register *****

Picture 1.6



- Step 9** – If a second transmitter needs to be registered with the receiver, repeat Steps 6-8 (**remember only one(1) Beta Max transmitter can be ON at a time**). Otherwise remove power from control box and allow 5 minutes to cycle down and turn off the wireless transmitter by pressing the “**OFF/STOP**” button.
- Step 10** - Reinstall the yellow cover and power the system back **ON** after cycle time. Test the functions of the wireless system. After correct operations have been tested, place the system back into normal service.